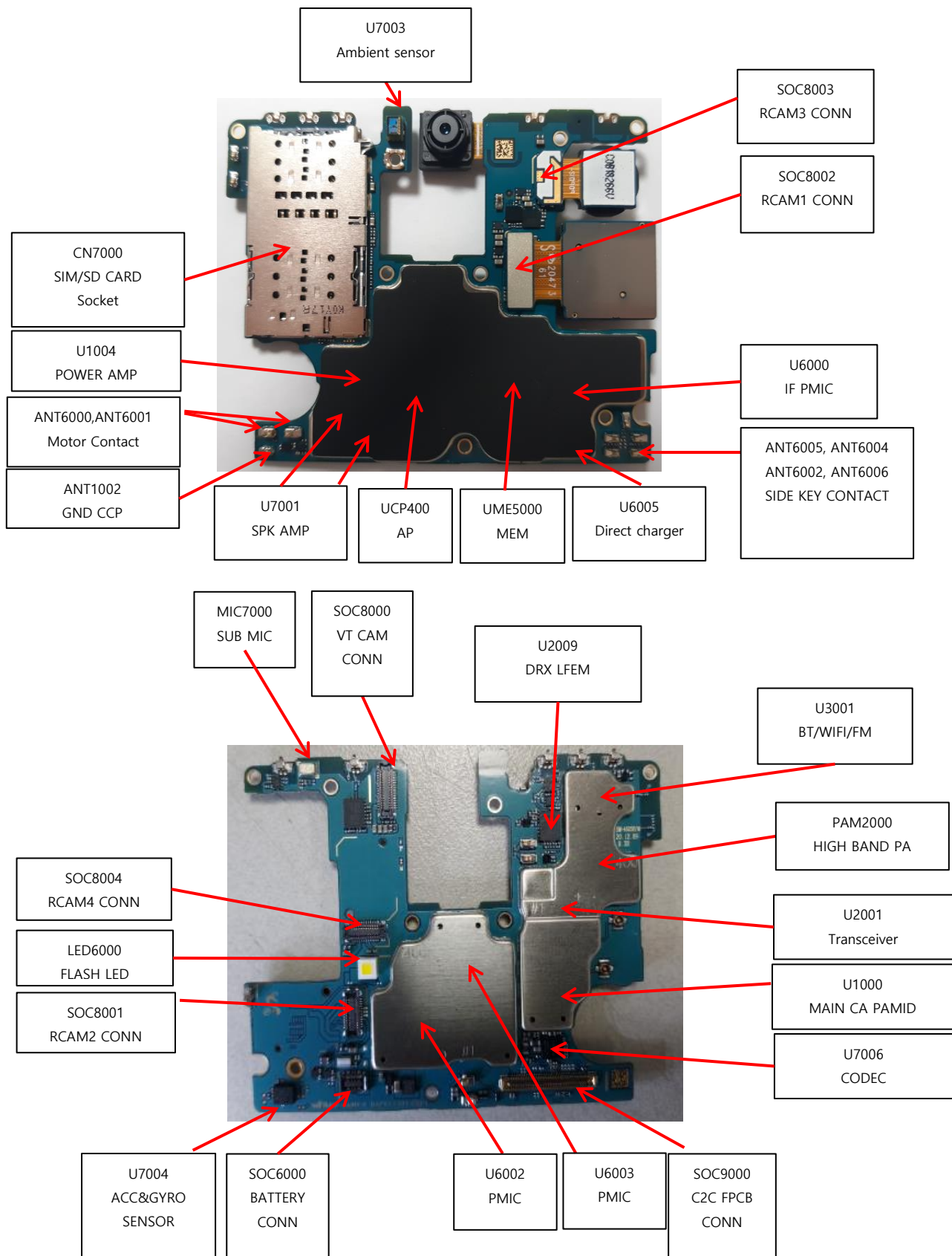
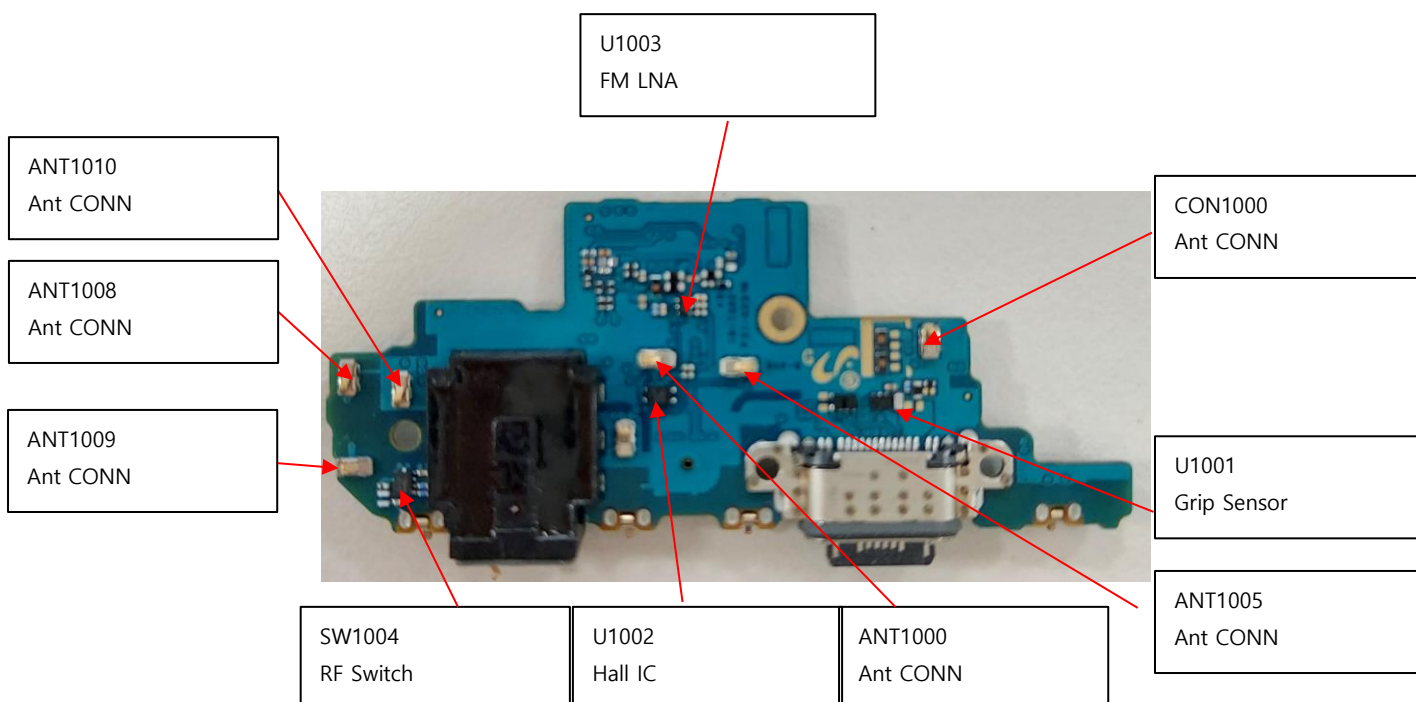
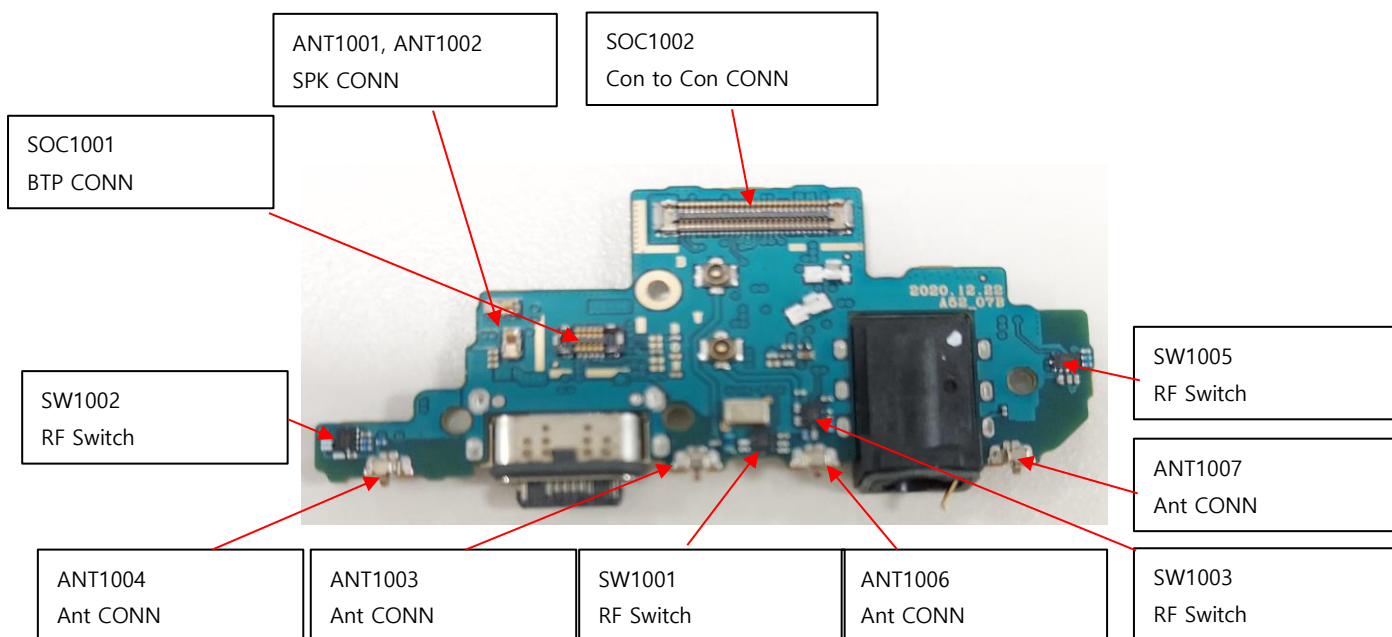


## 8. Level 3 Repair (VIETMOBILE.VN)

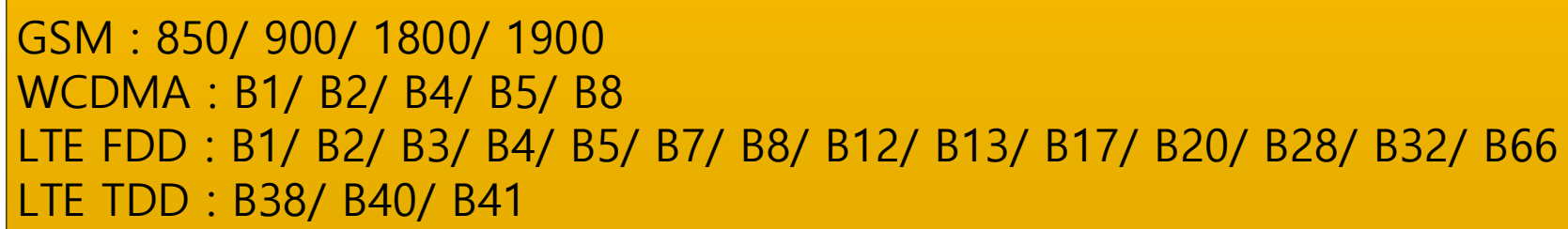
### 8-1. Components Layout

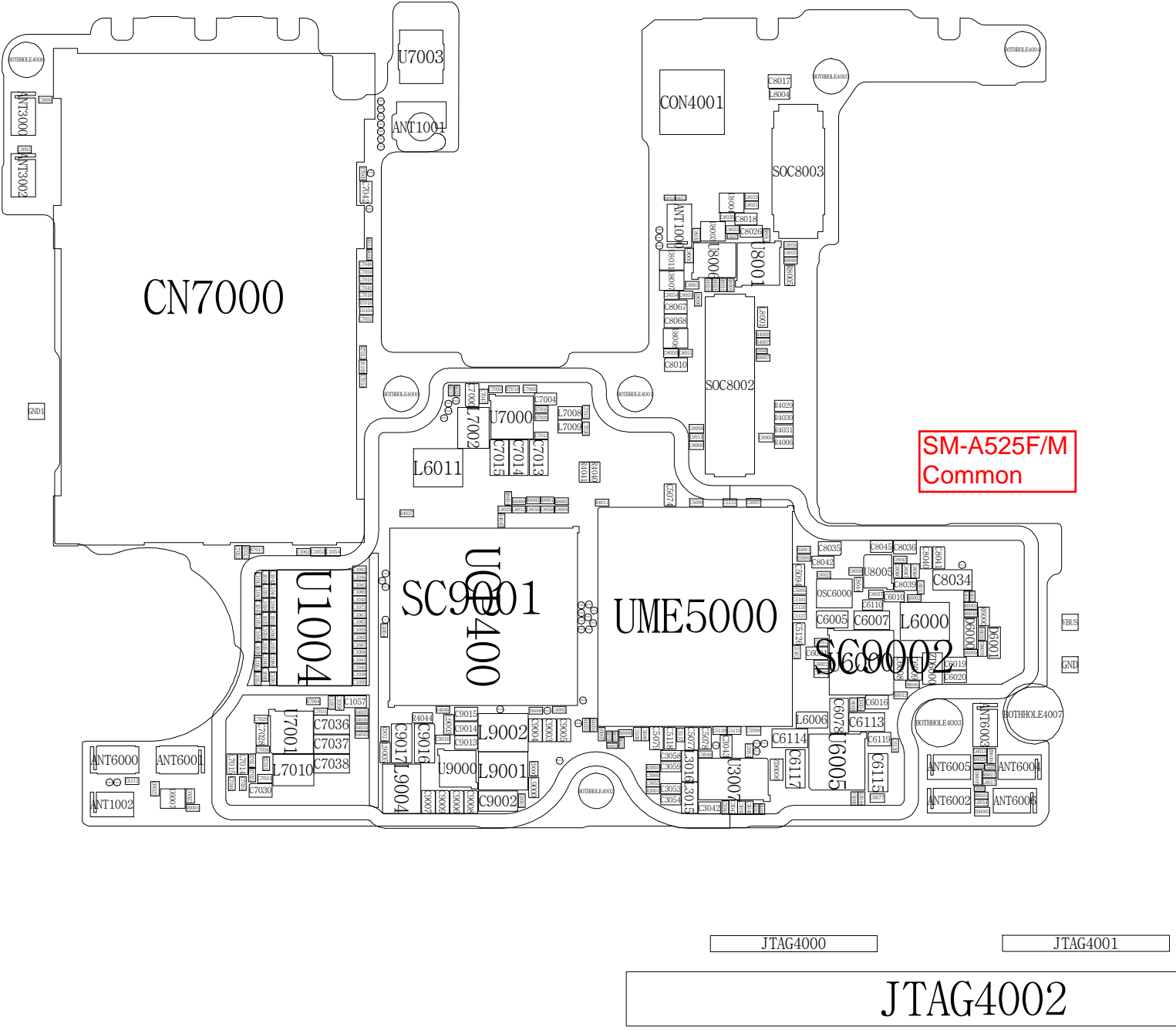


## 8. Level 3 Repair (VIETMOBILE.VN)

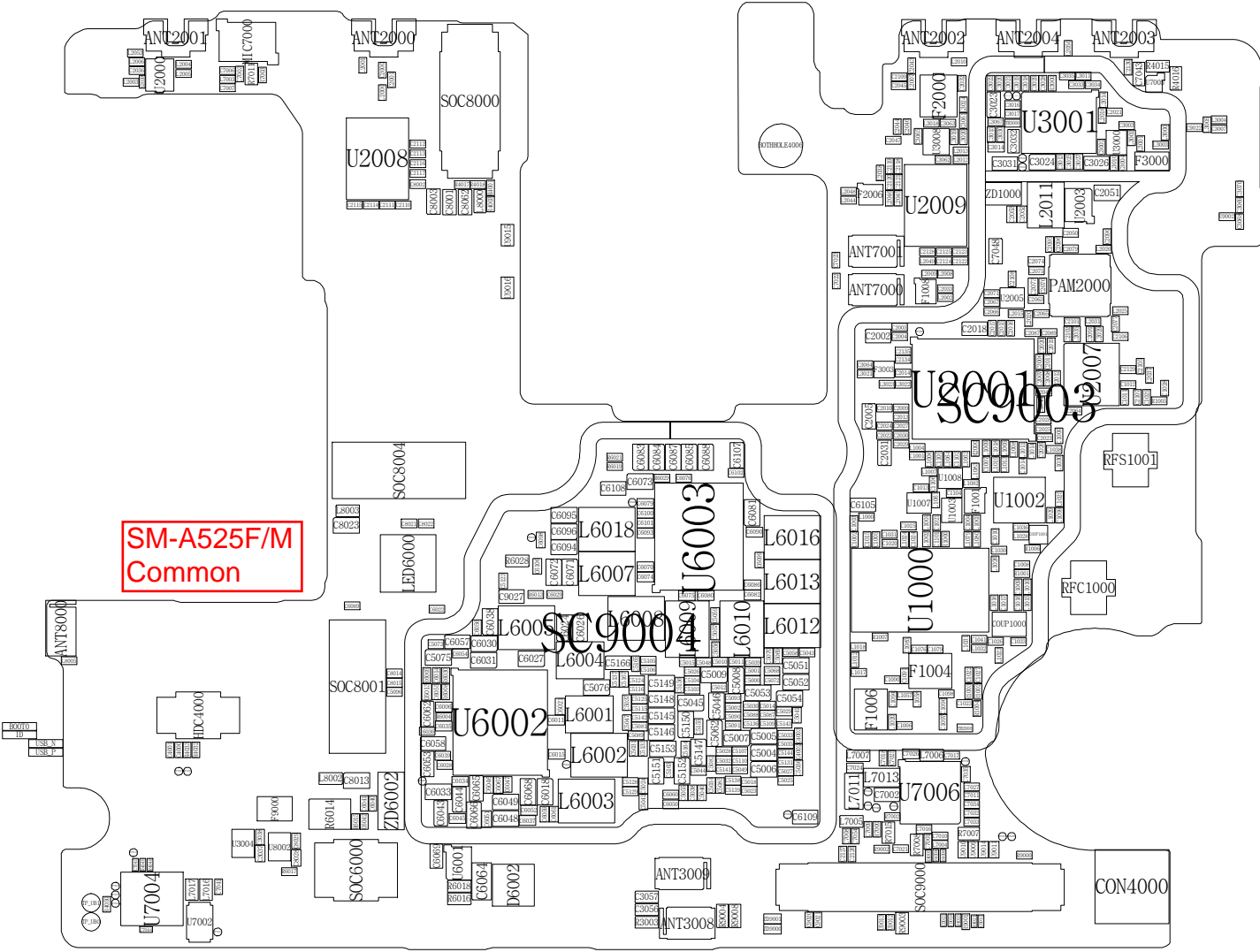


SM-A525F/M  
Common



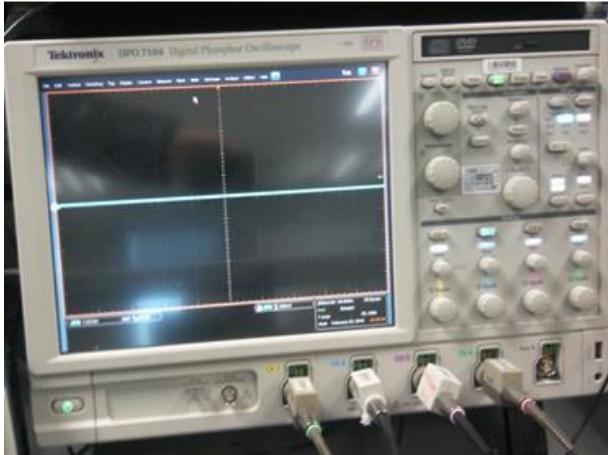






## 8. Level 3 Repair

### 8-3. Flow chart of Troubleshooting.



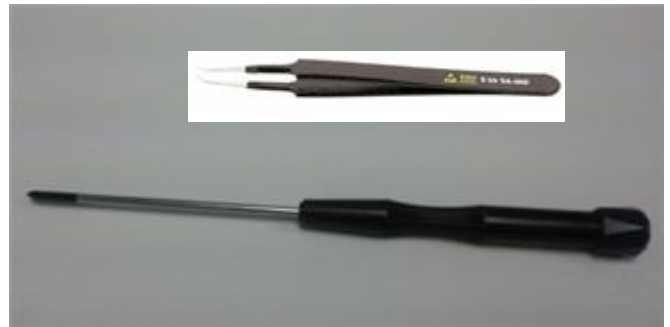
**Oscilloscope**



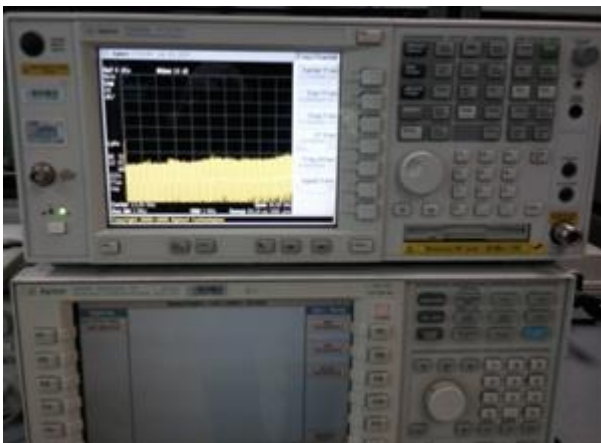
**Digital Multimeter**



**Power Supply**



**+ driver, ESD Safe Tweezer**



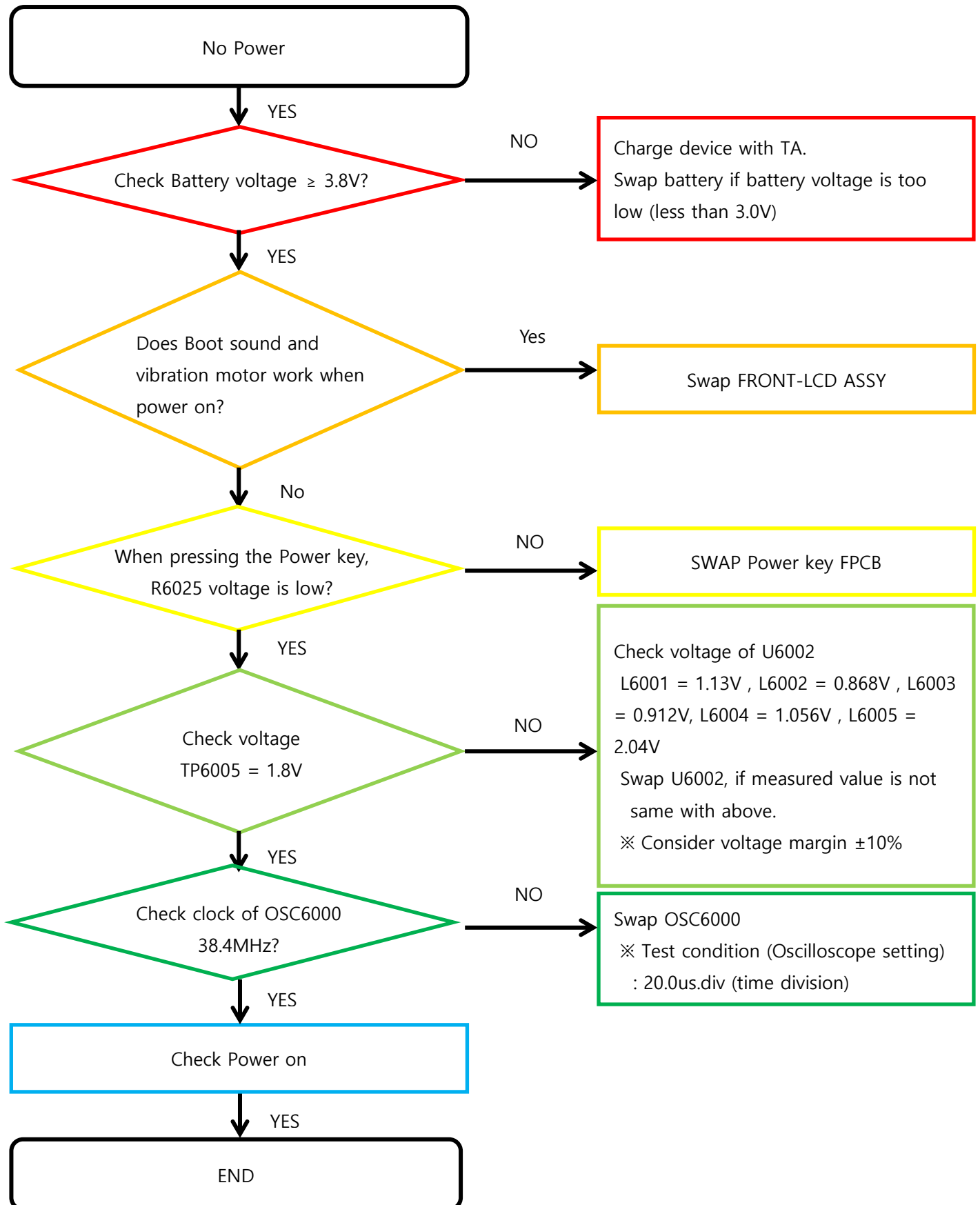
**8960 & Spectrum Analyzer**



**Soldering iron**

## 8. Level 3 Repair

### 8-4-1. Power On

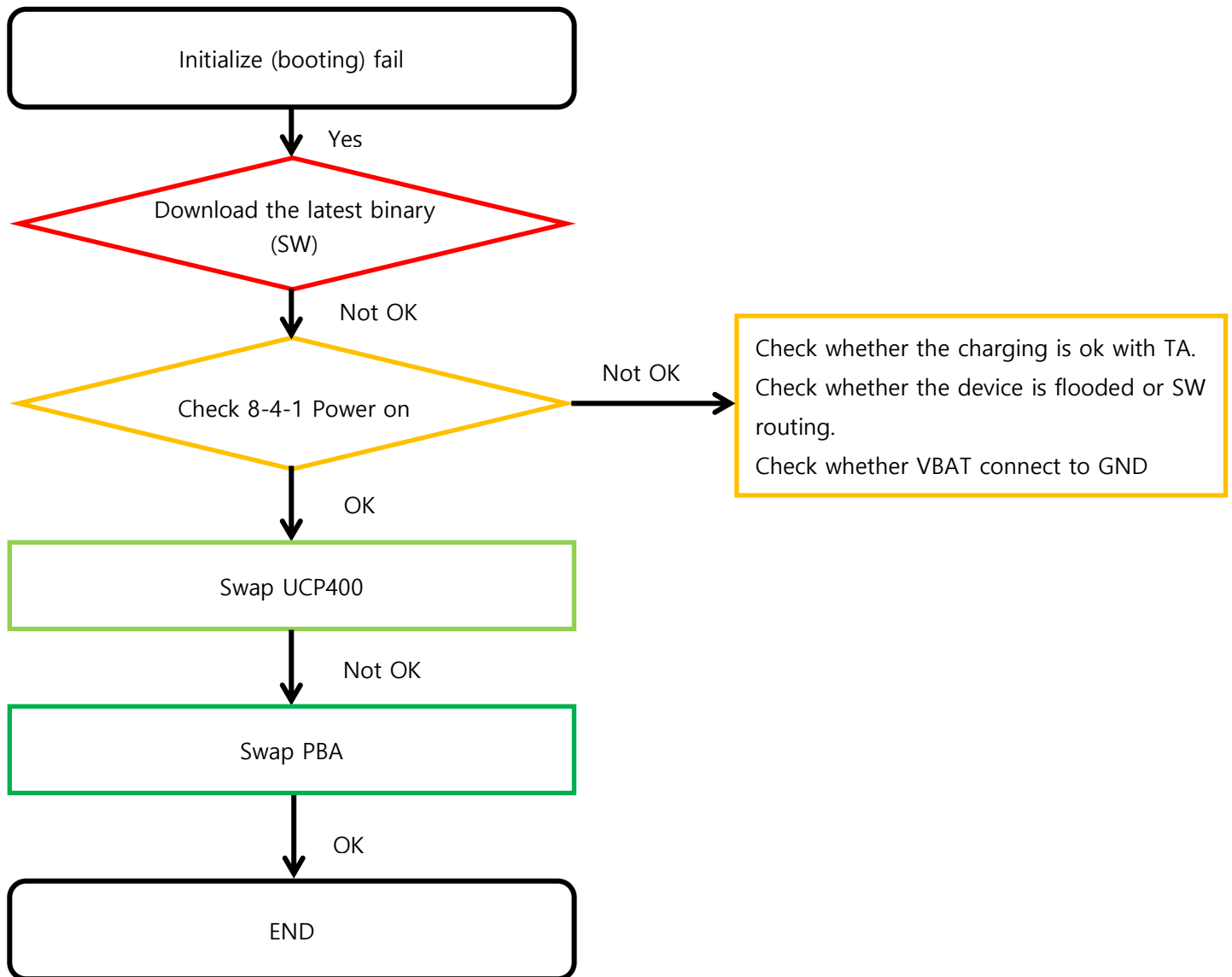


---

## 8. Level 3 Repair

---

### 8-4-2. Initial



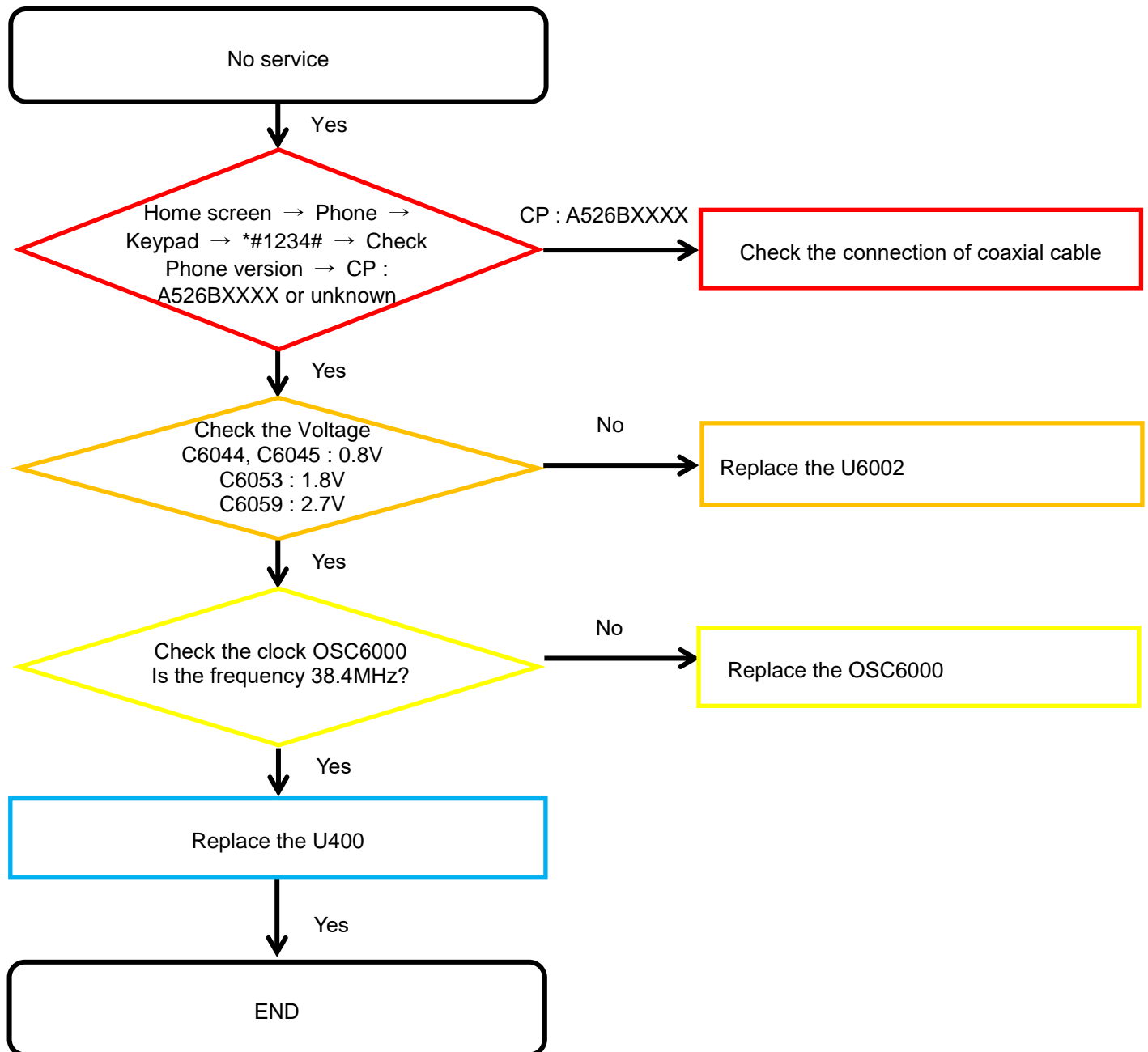


---

## 8. Level 3 Repair

---

### 8-4-3. No Service

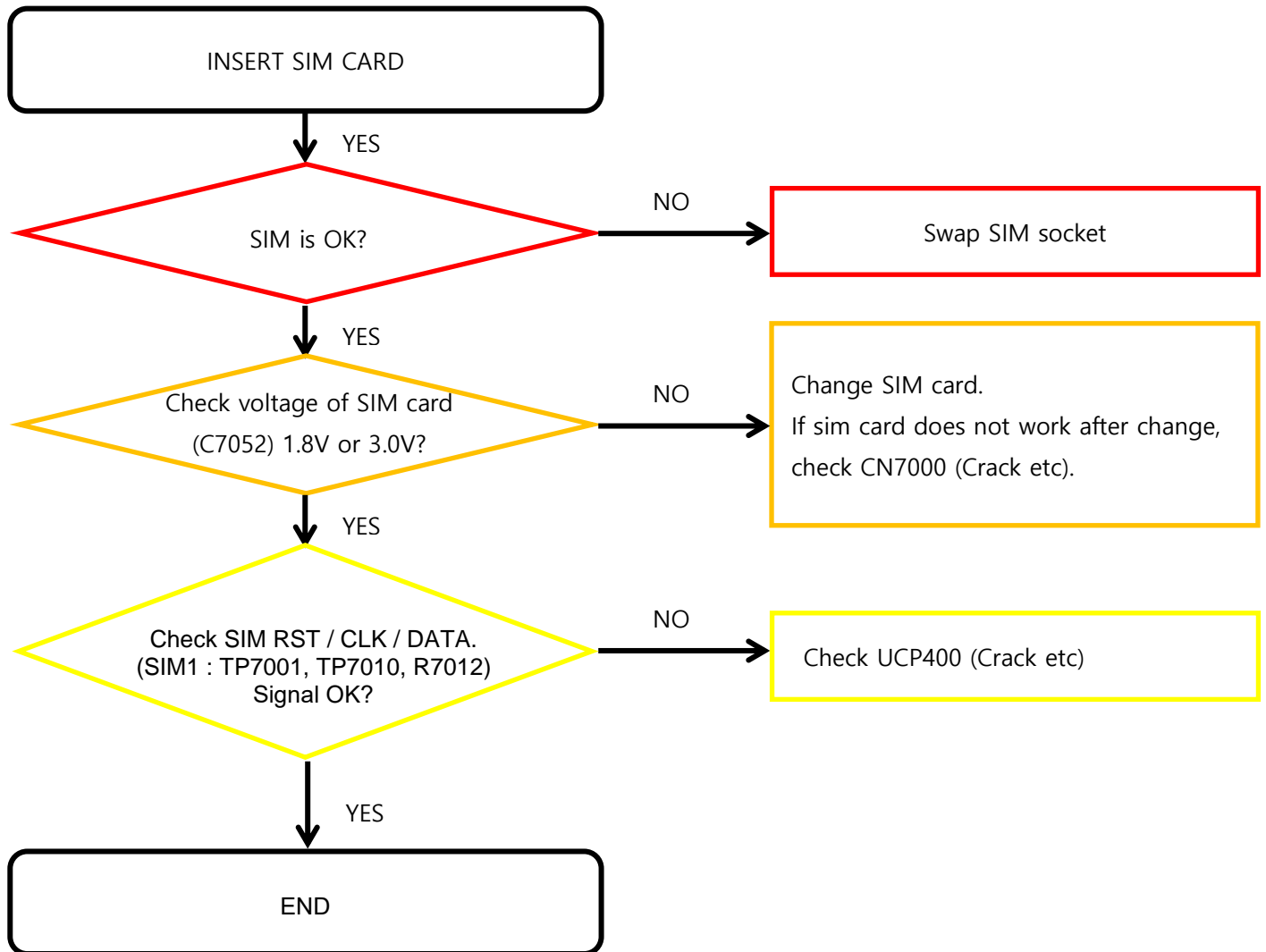


---

## 8. Level 3 Repair

---

### 8-4-4. SIM Part

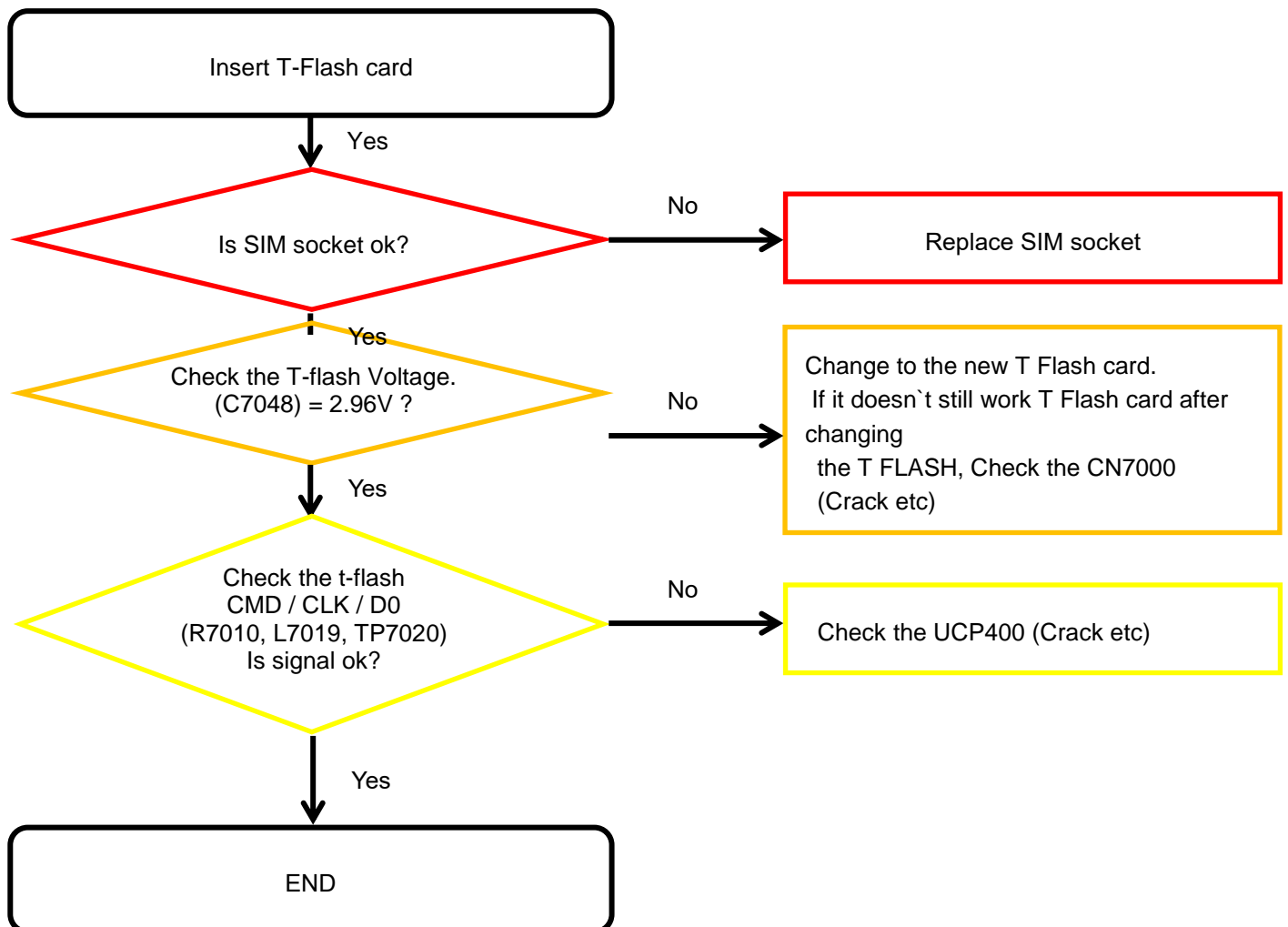


---

## 8. Level 3 Repair

---

### 8-4-5. T-Flash Part

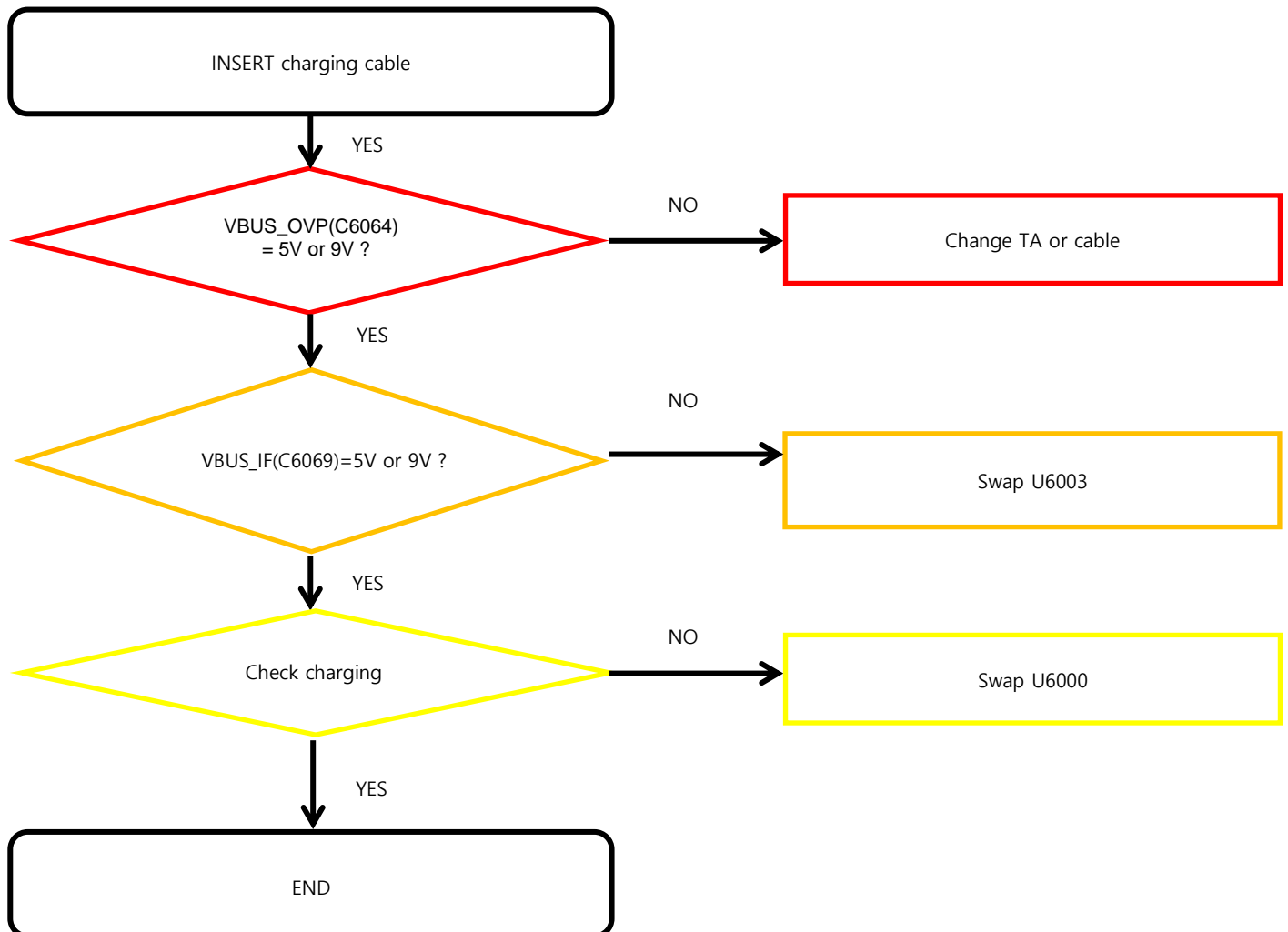


---

## 8. Level 3 Repair

---

### 8-4-6. Cable Charging Part (Normal/Fast)

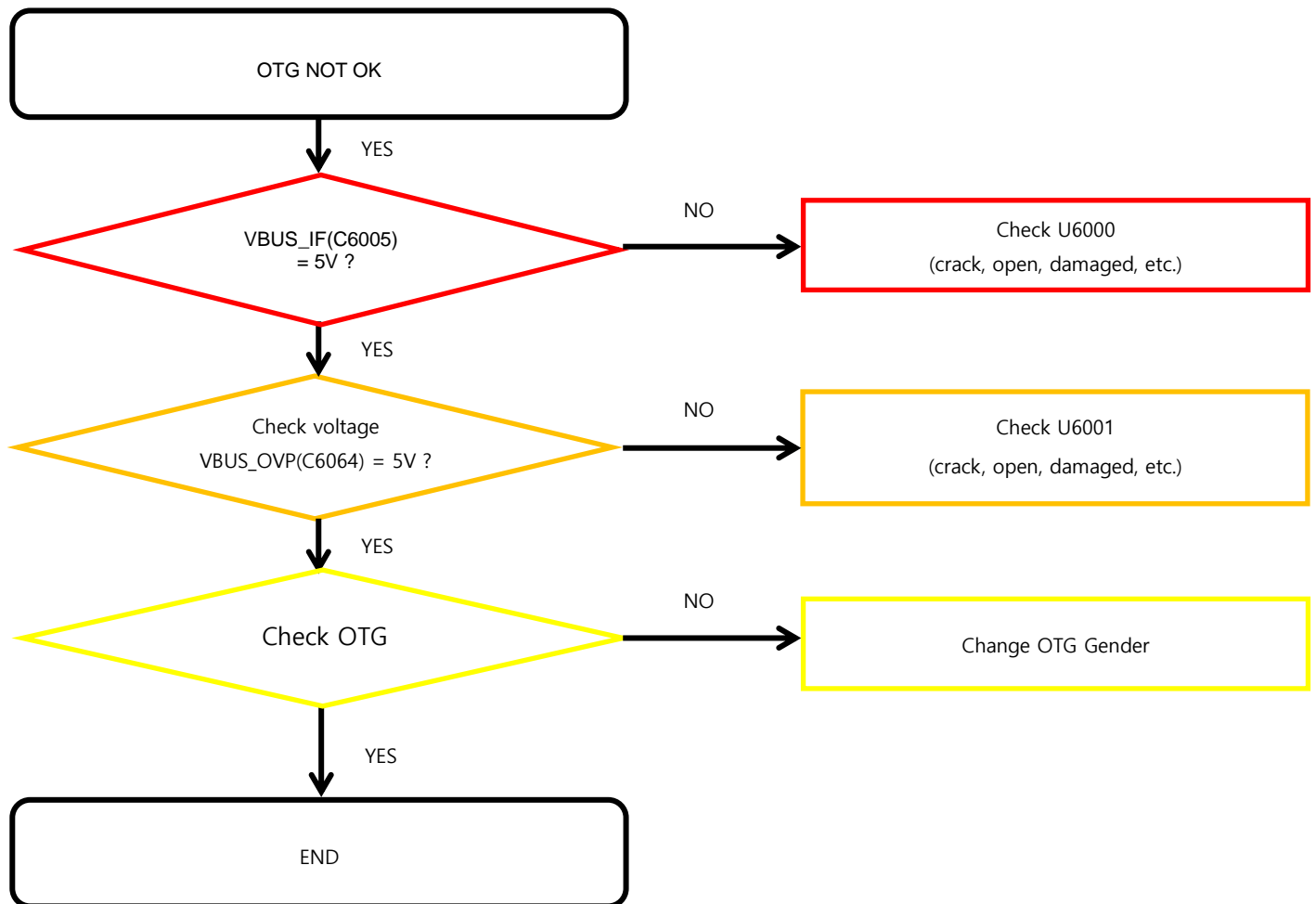


---

## 8. Level 3 Repair

---

### 8-4-7. OTG



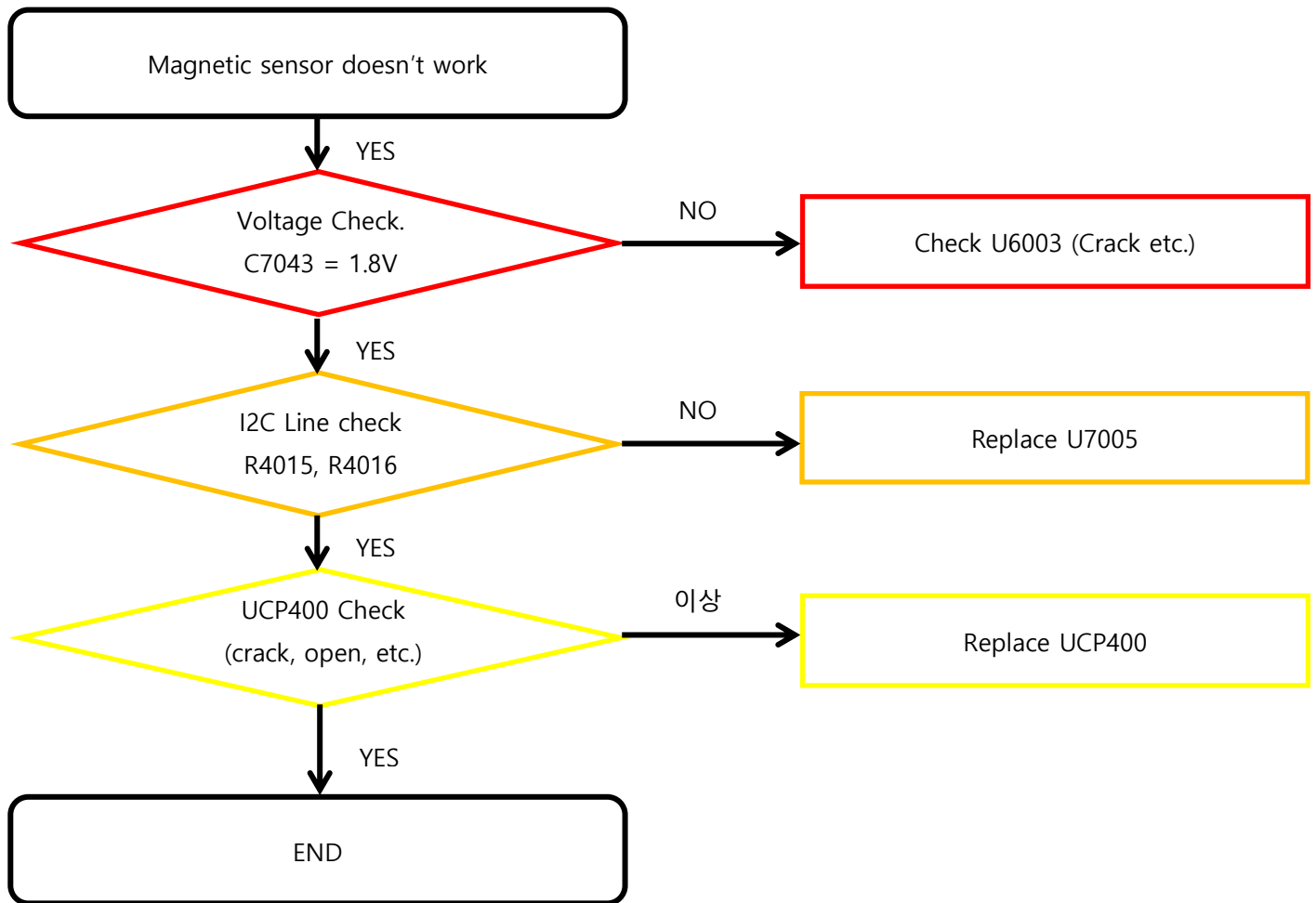


---

## 8. Level 3 Repair

---

### 8-4-8-1. Magnetic Sensor

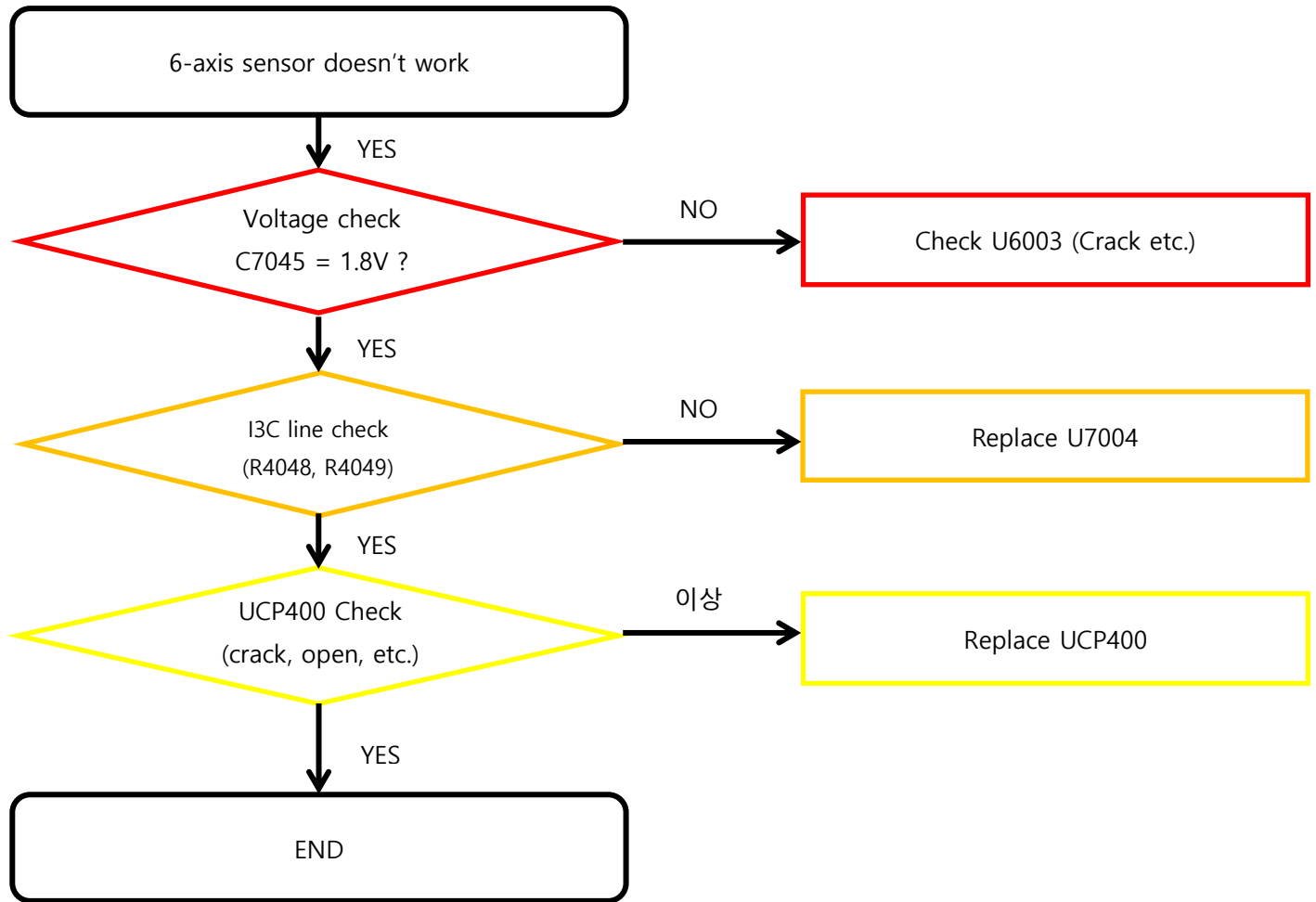


---

## 8. Level 3 Repair

---

### 8-4-8-2. 6Axis Sensor

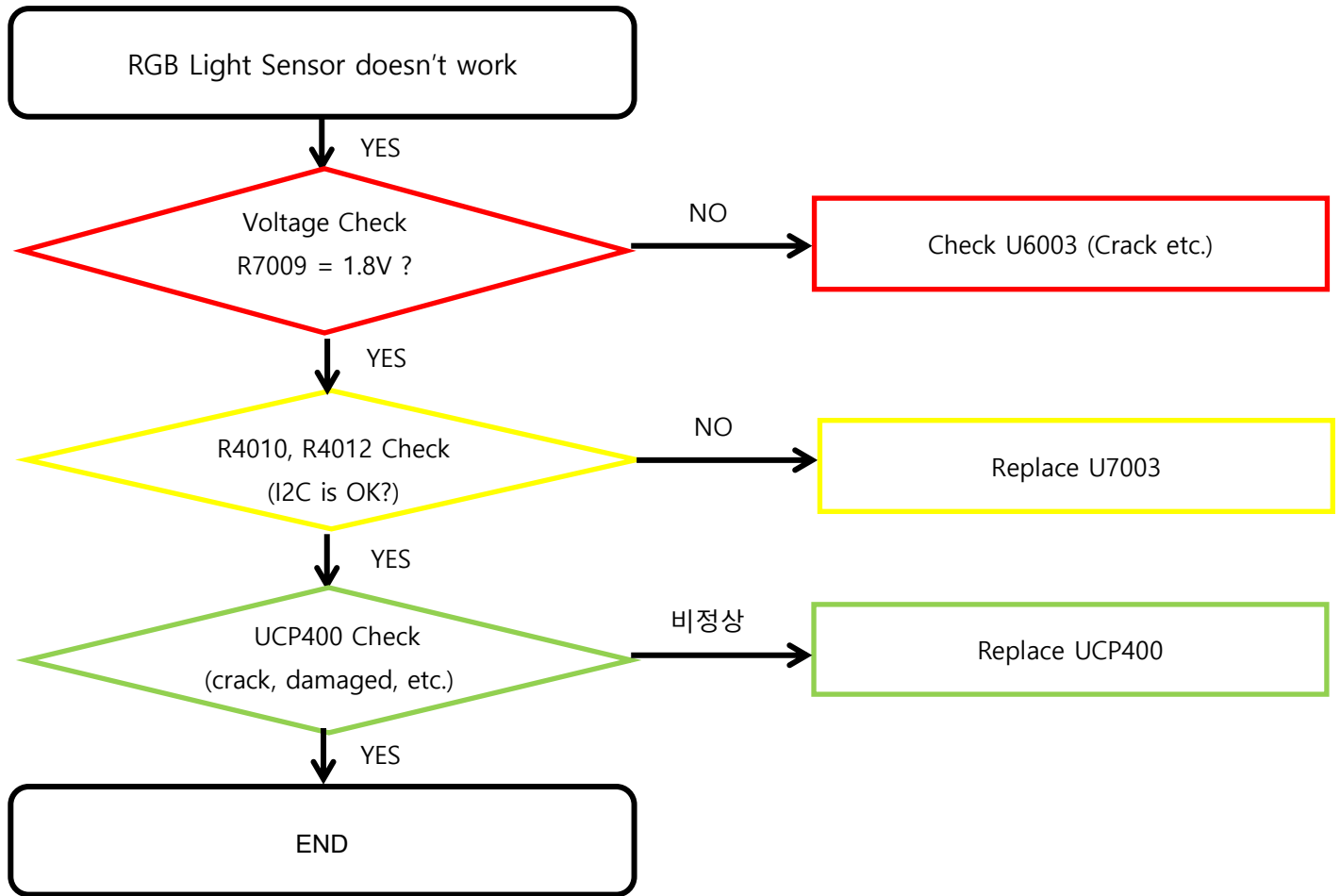


---

## 8. Level 3 Repair

---

### 8-4-8-3. RGB Light sensor

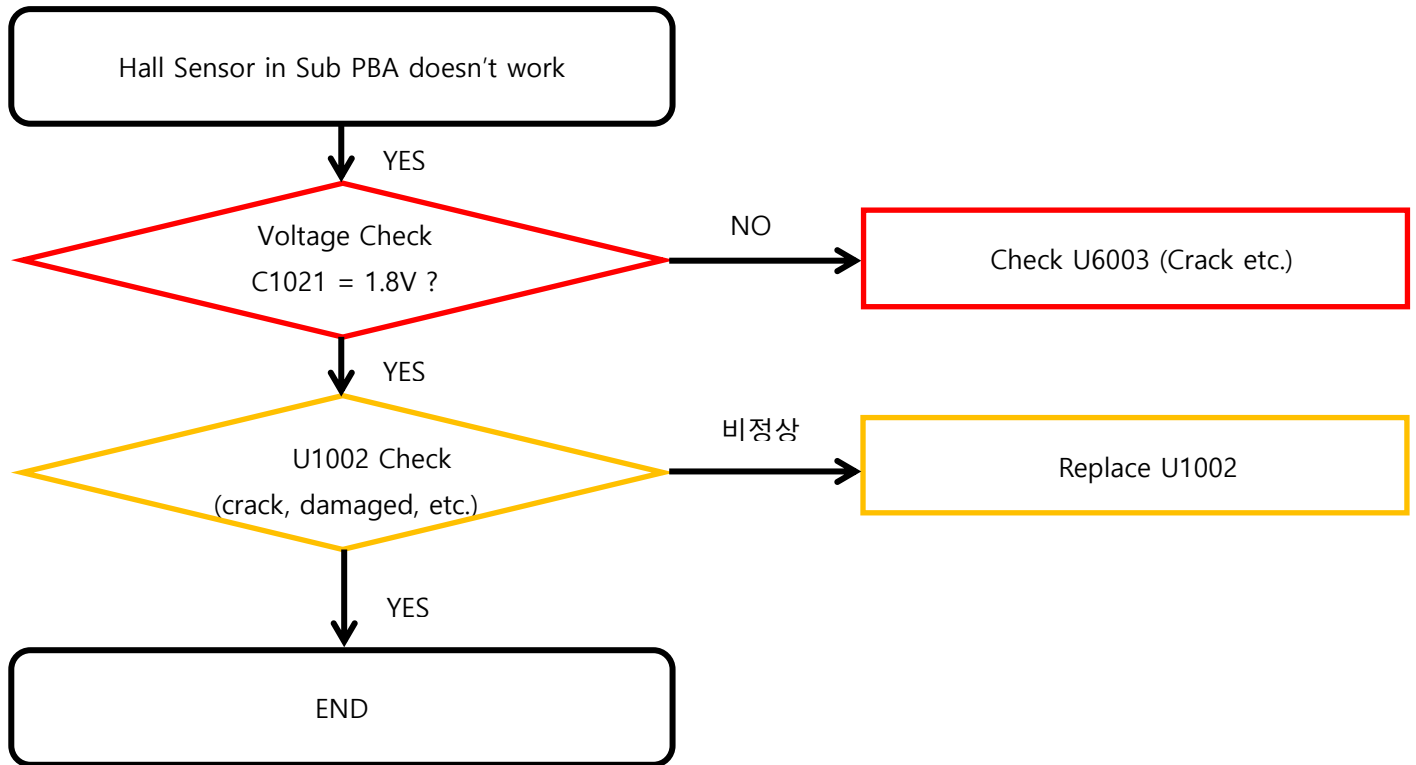


---

## 8. Level 3 Repair

---

### 8-4-8-4. Hall Sensor

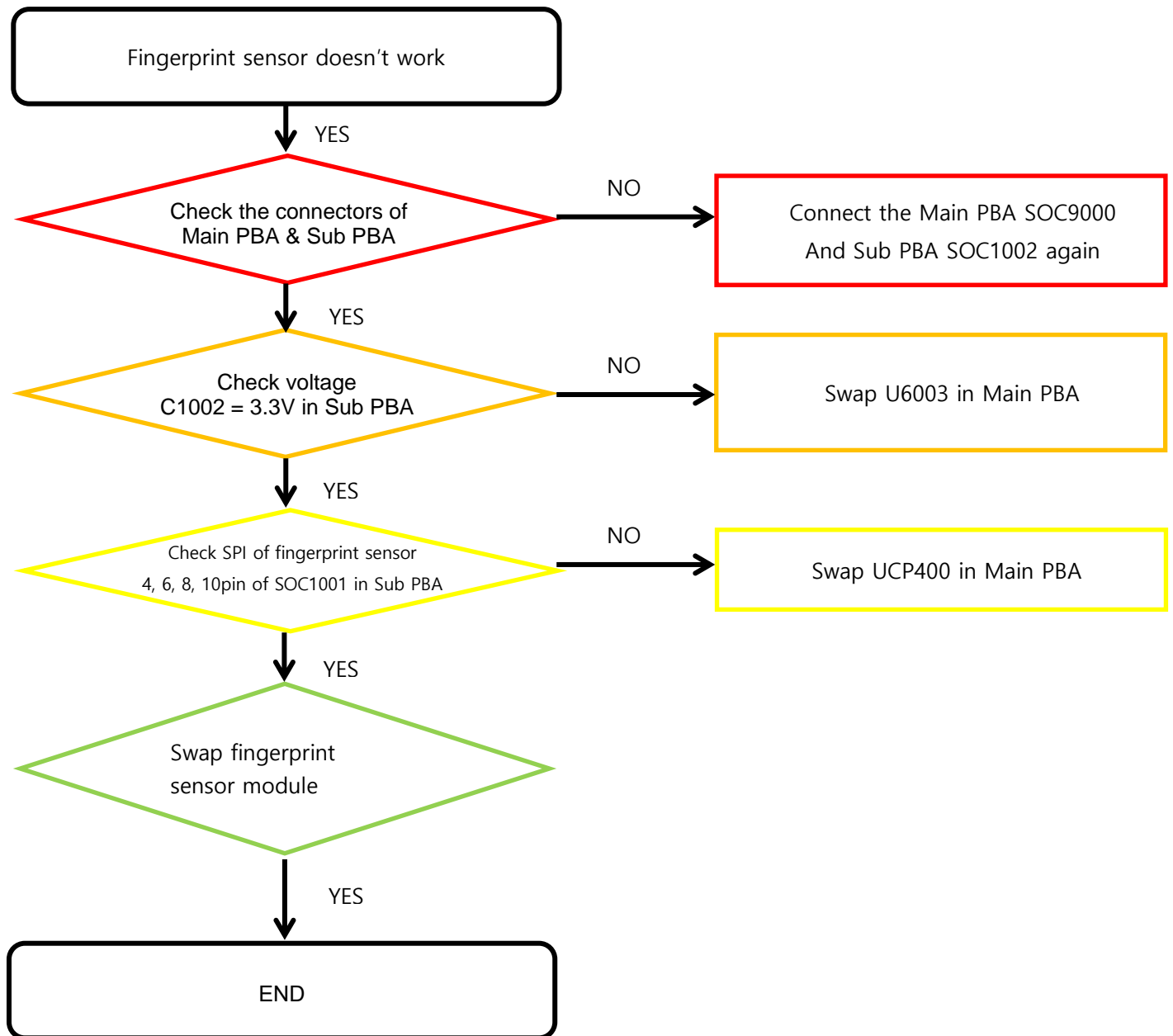


---

## 8. Level 3 Repair

---

### 8-4-8-5. Fingerprint Sensor



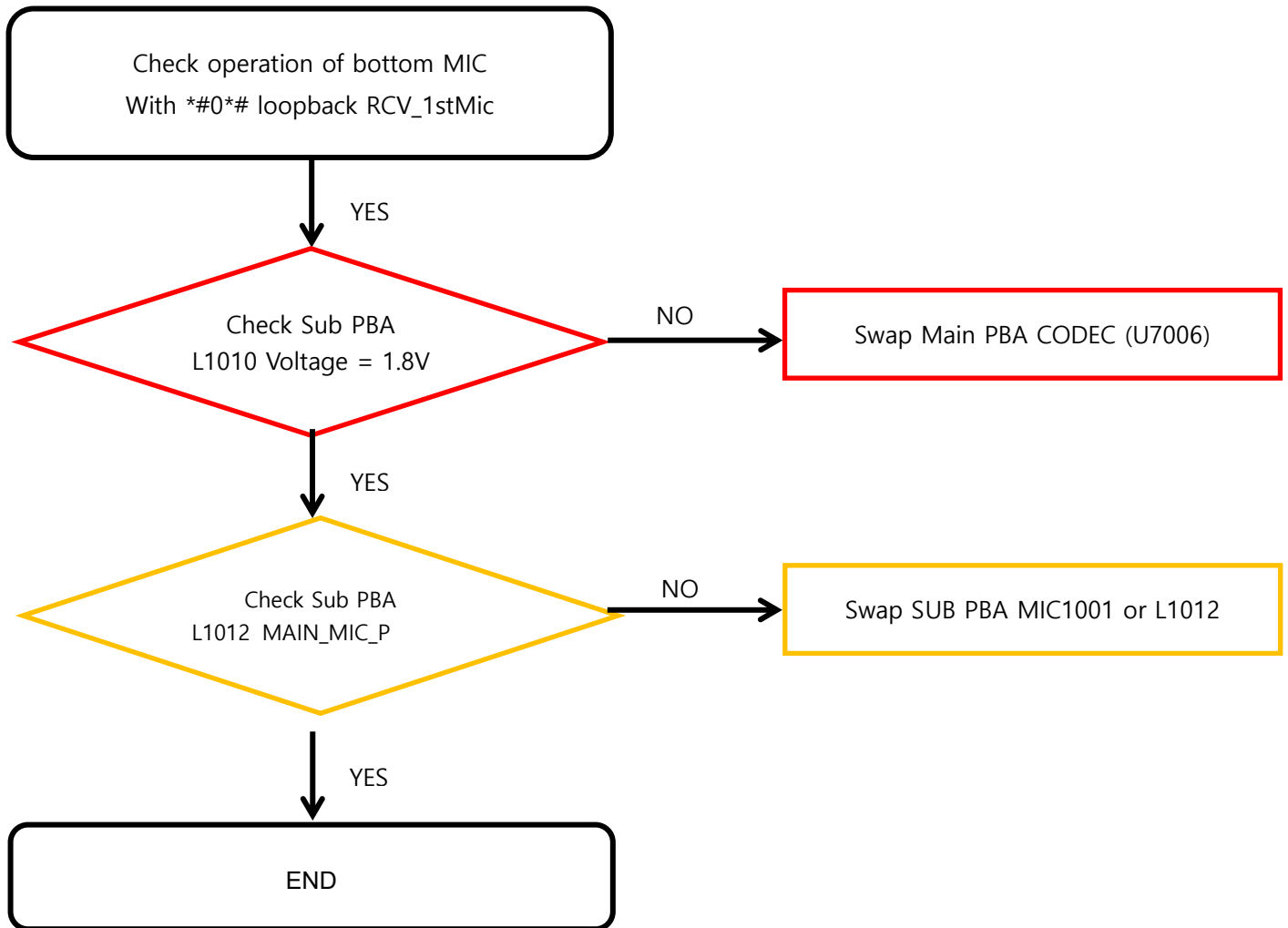


---

## 8. Level 3 Repair

---

### 8-4-9-1. Microphone Part - Main MIC

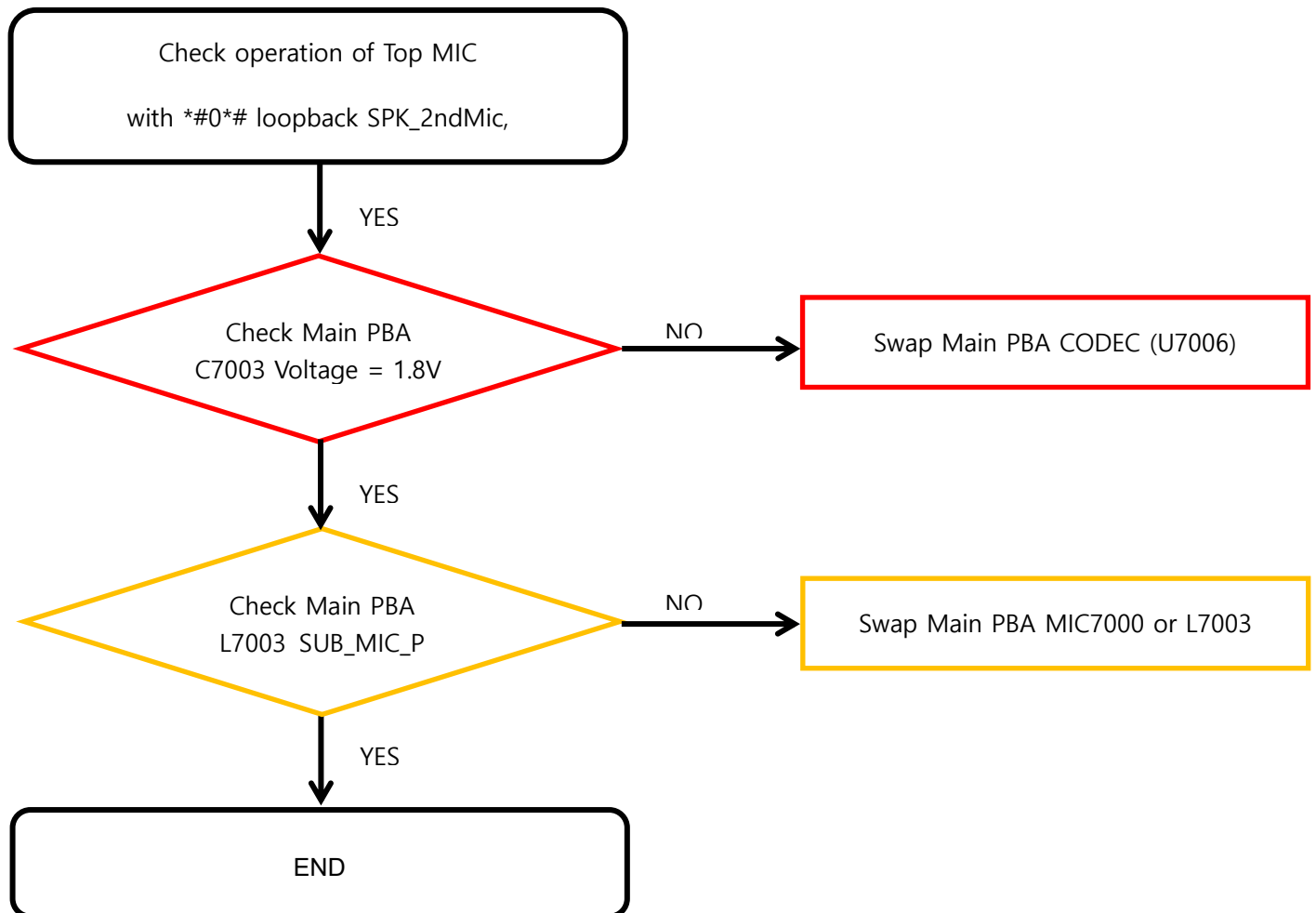


---

## 8. Level 3 Repair

---

### 8-4-9-2. Microphone Part - Sub(2nd) MIC

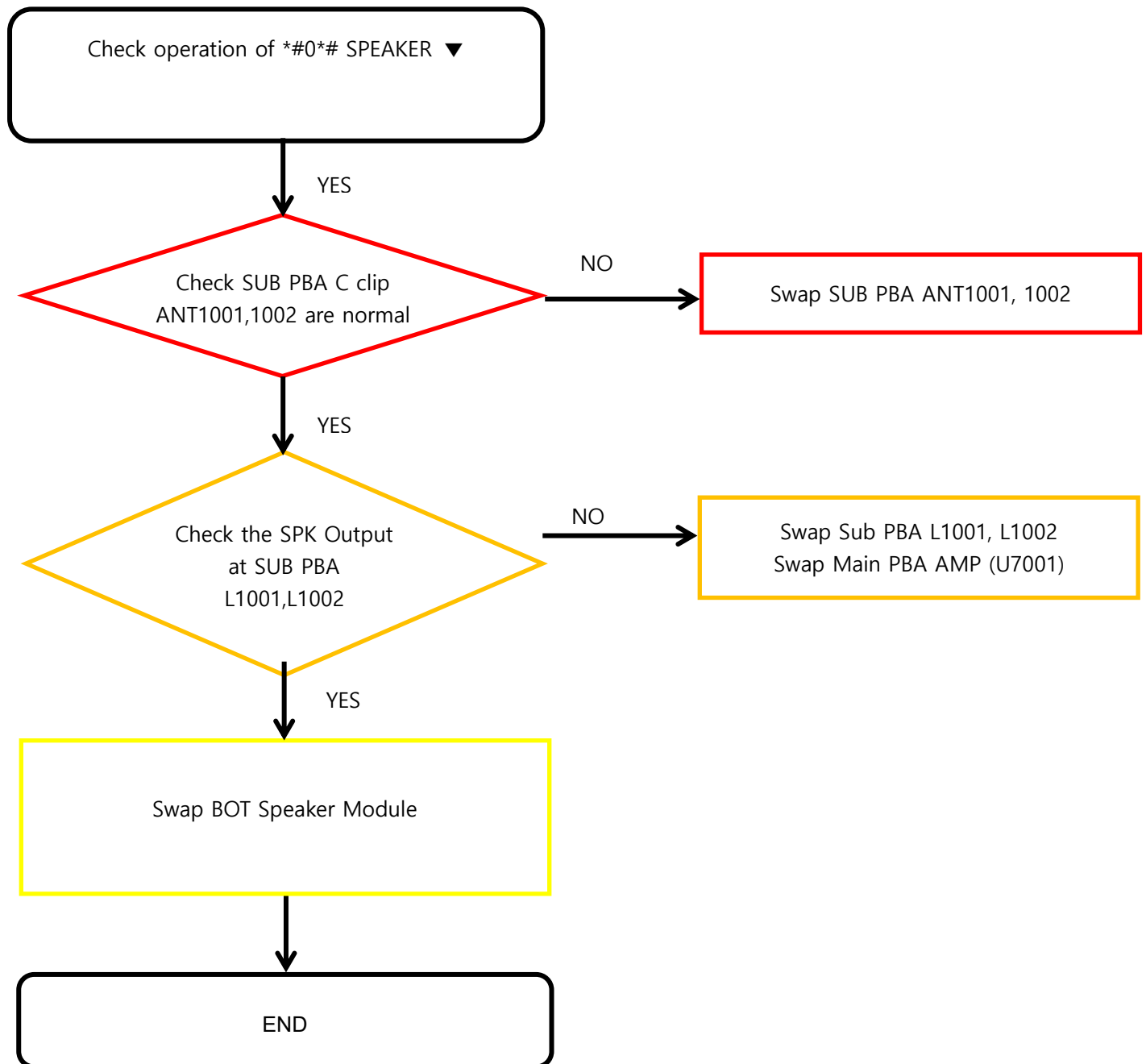


---

## 8. Level 3 Repair

---

### 8-4-10. Speaker Part - Bottom speaker

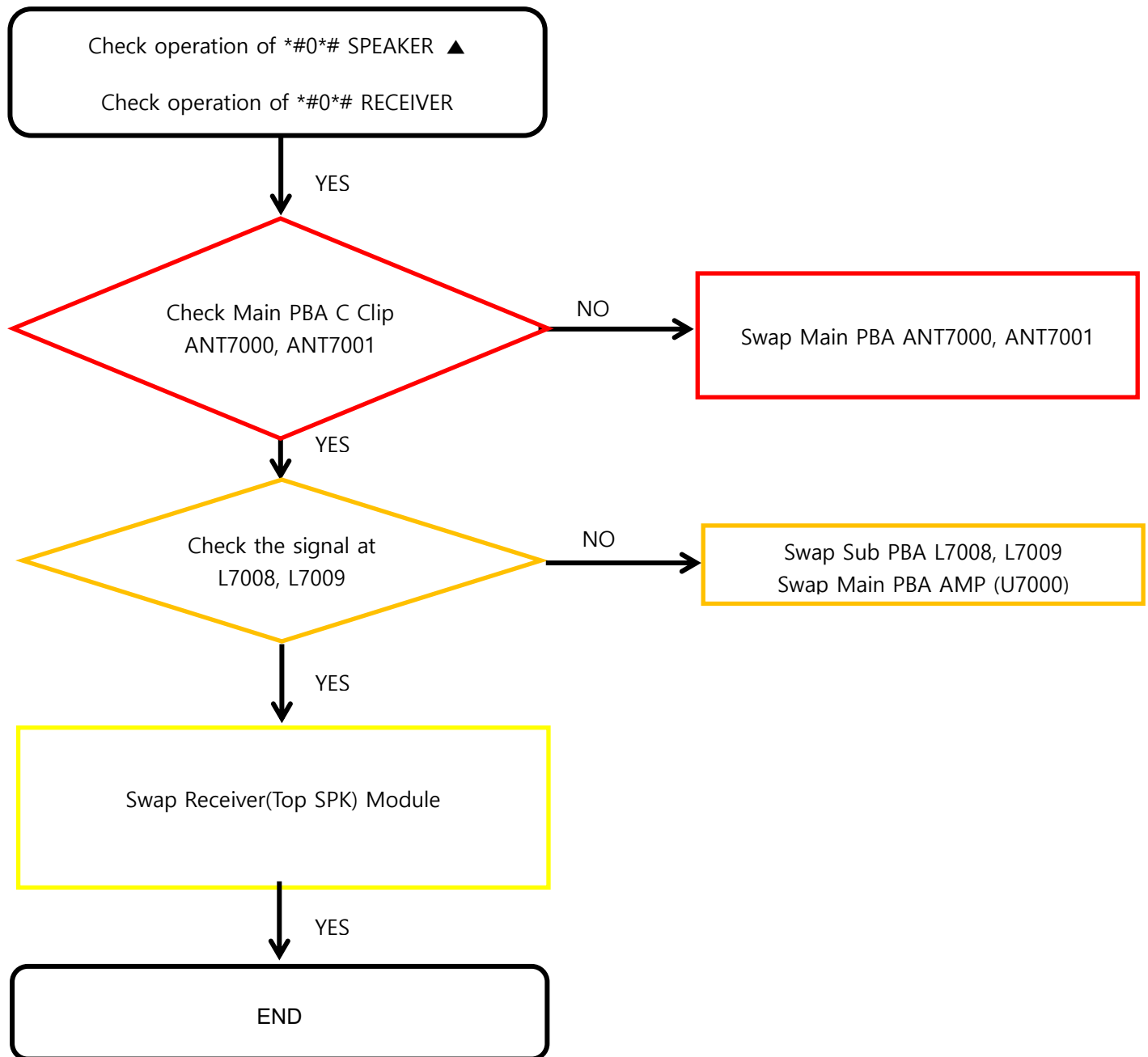


---

## 8. Level 3 Repair

---

### 8-4-11. Speaker Part - Top speaker

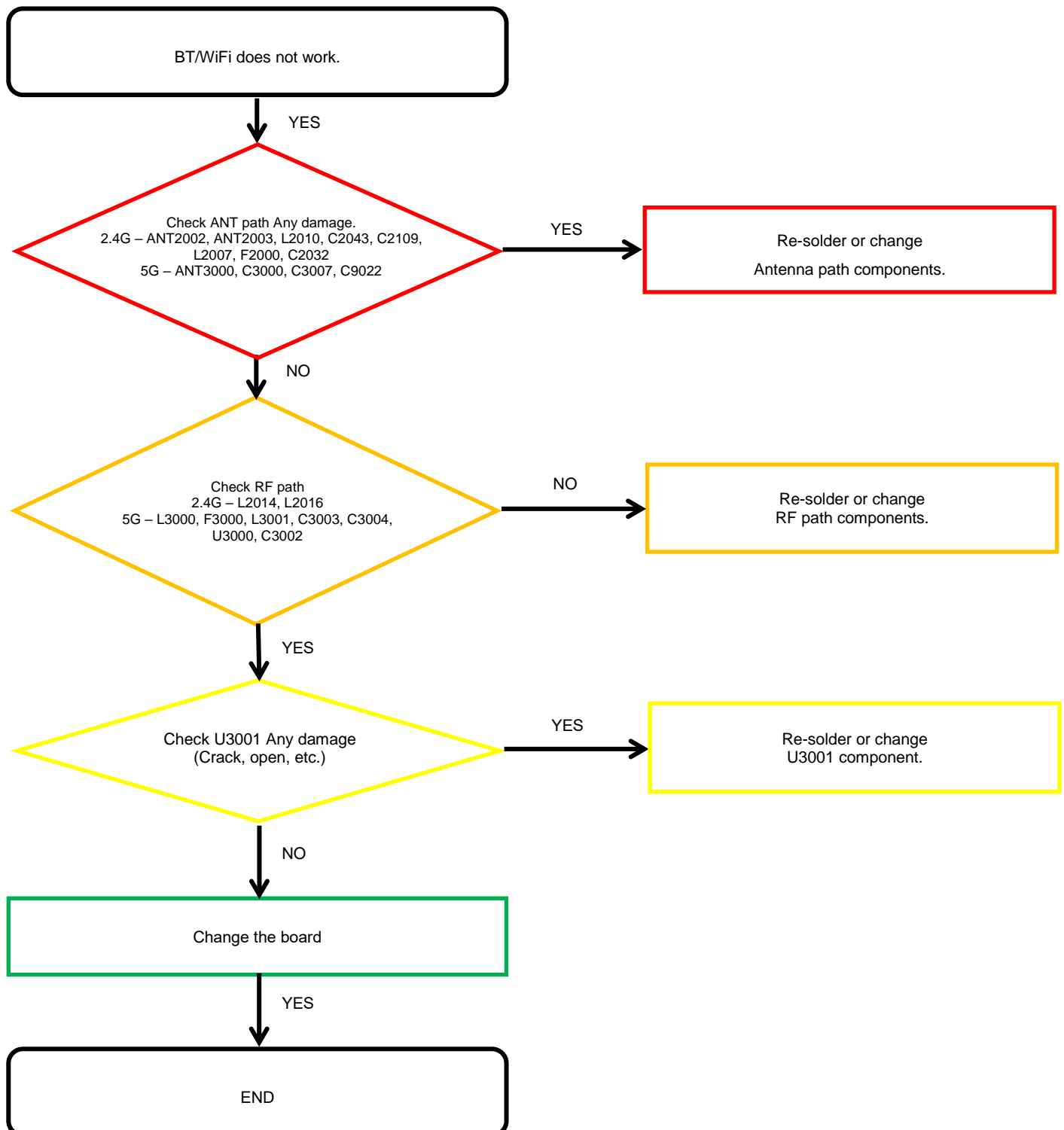


---

## 8. Level 3 Repair

---

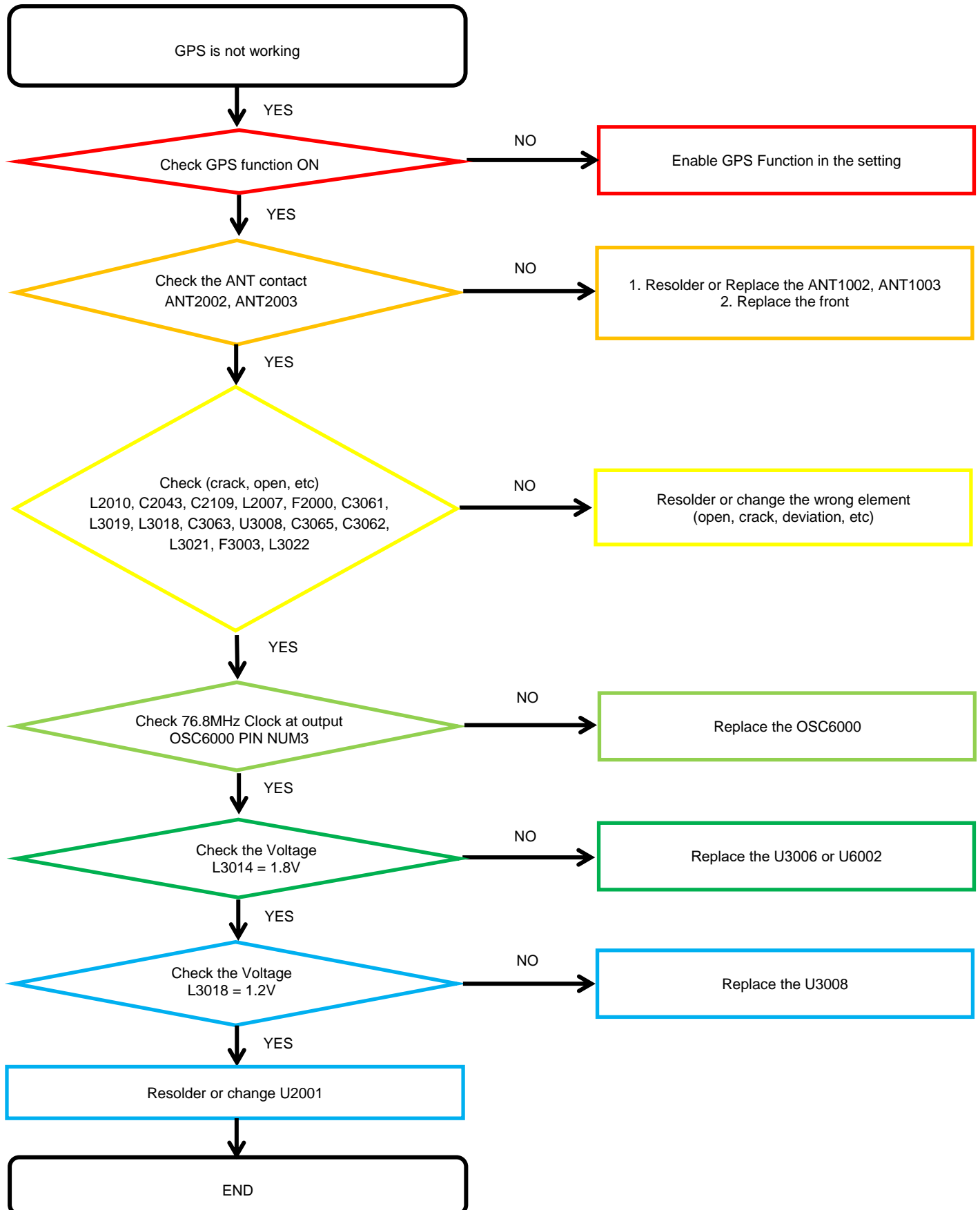
### 8-4-12. BT/WIFI





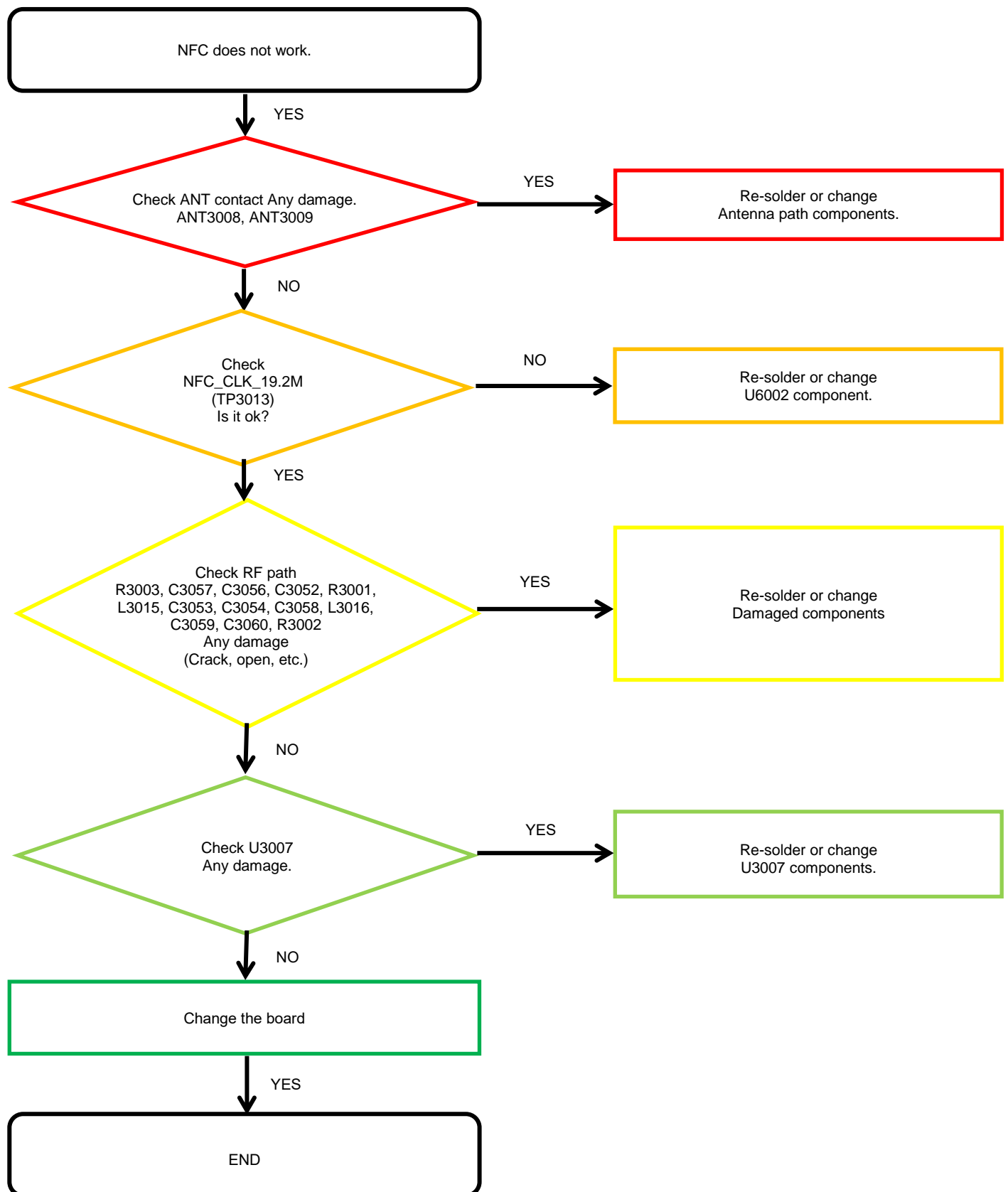
## 8. Level 3 Repair

### 8-4-13. GPS



## 8. Level 3 Repair

### 8-4-14. NFC

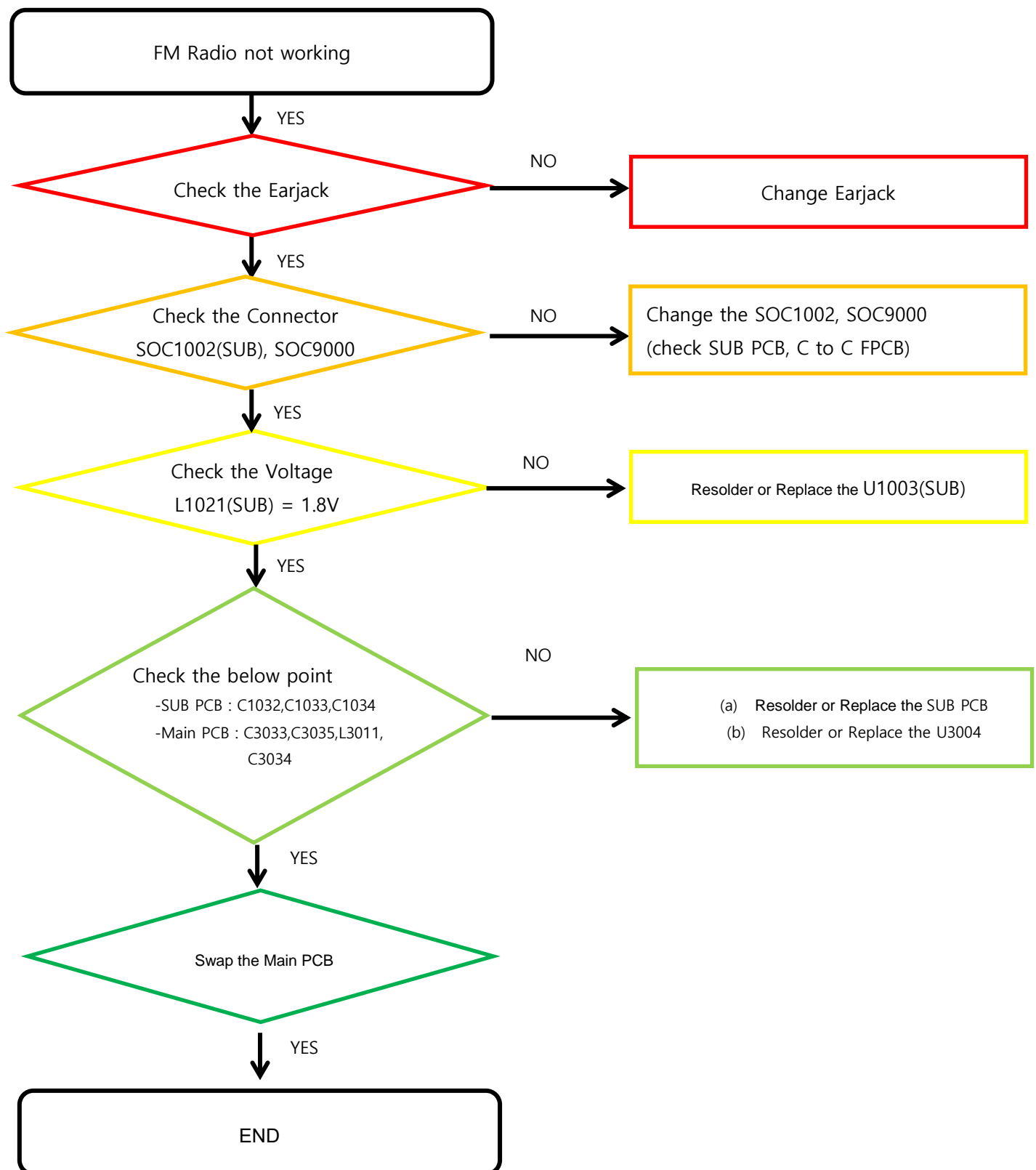


---

## 8. Level 3 Repair

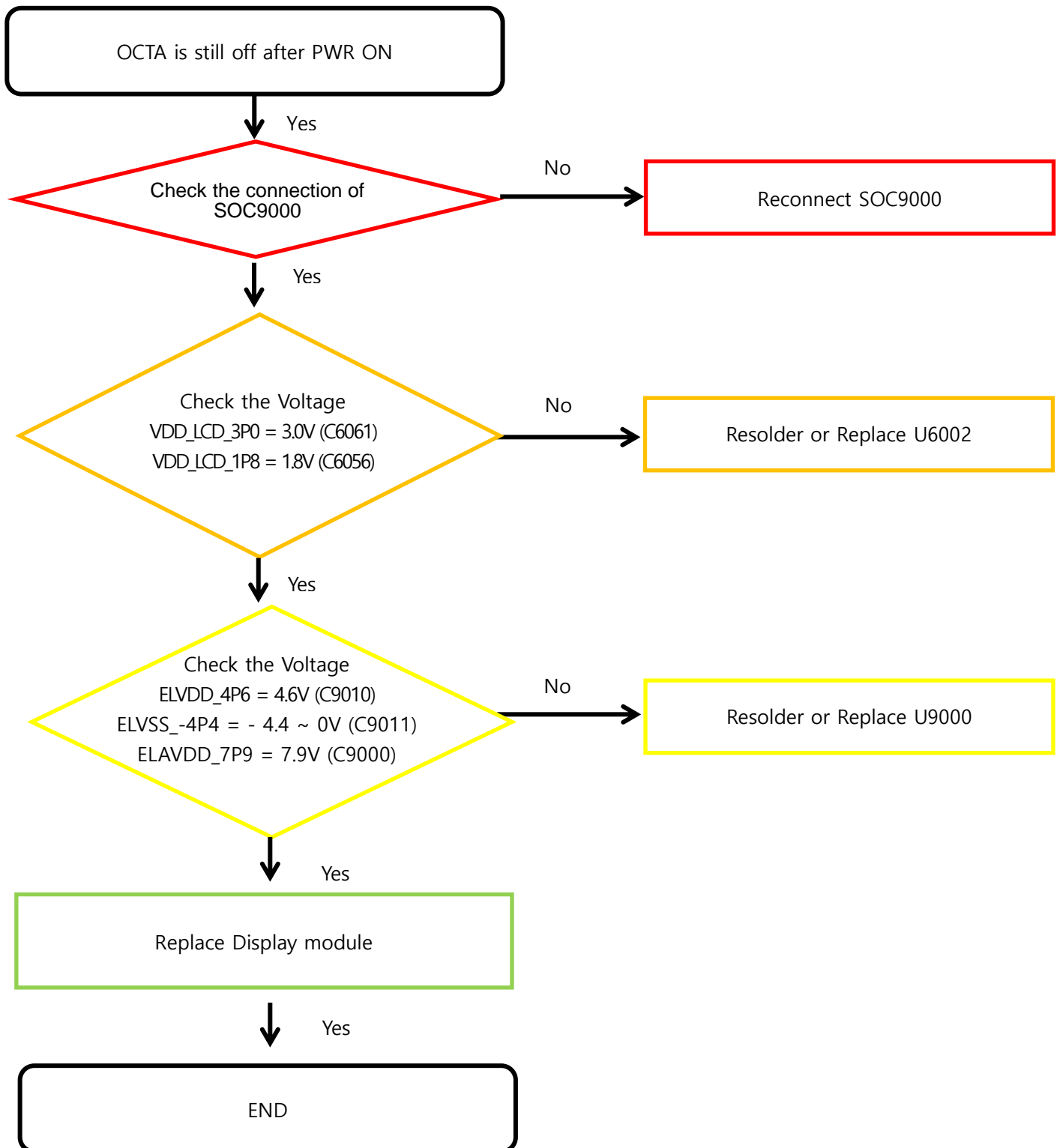
---

### 8-4-15. FM Radio



## 8. Level 3 Repair

### 8-4-16. Display

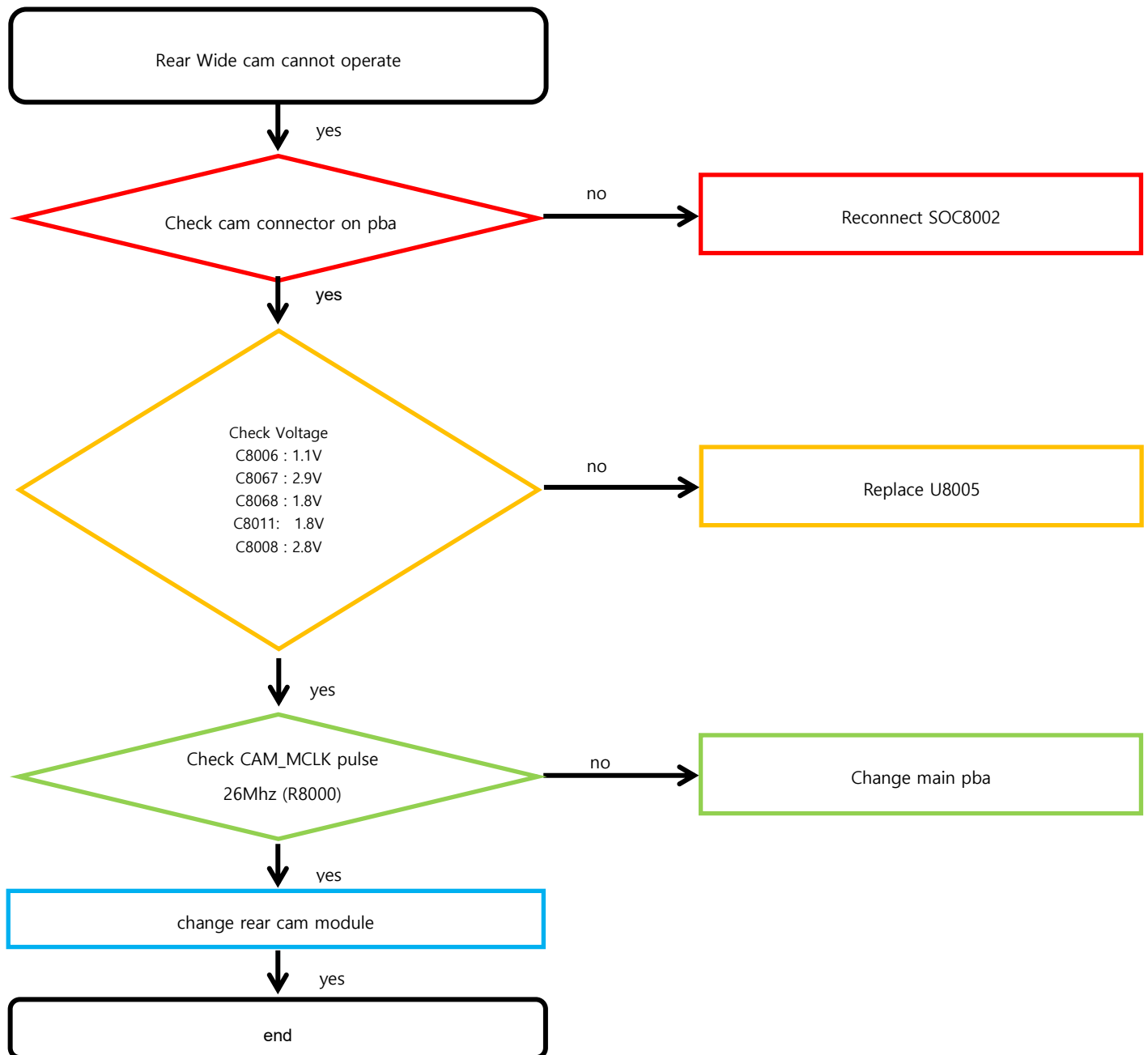


---

## 8. Level 3 Repair

---

### 8-4-17. Rear CAMERA (64M)



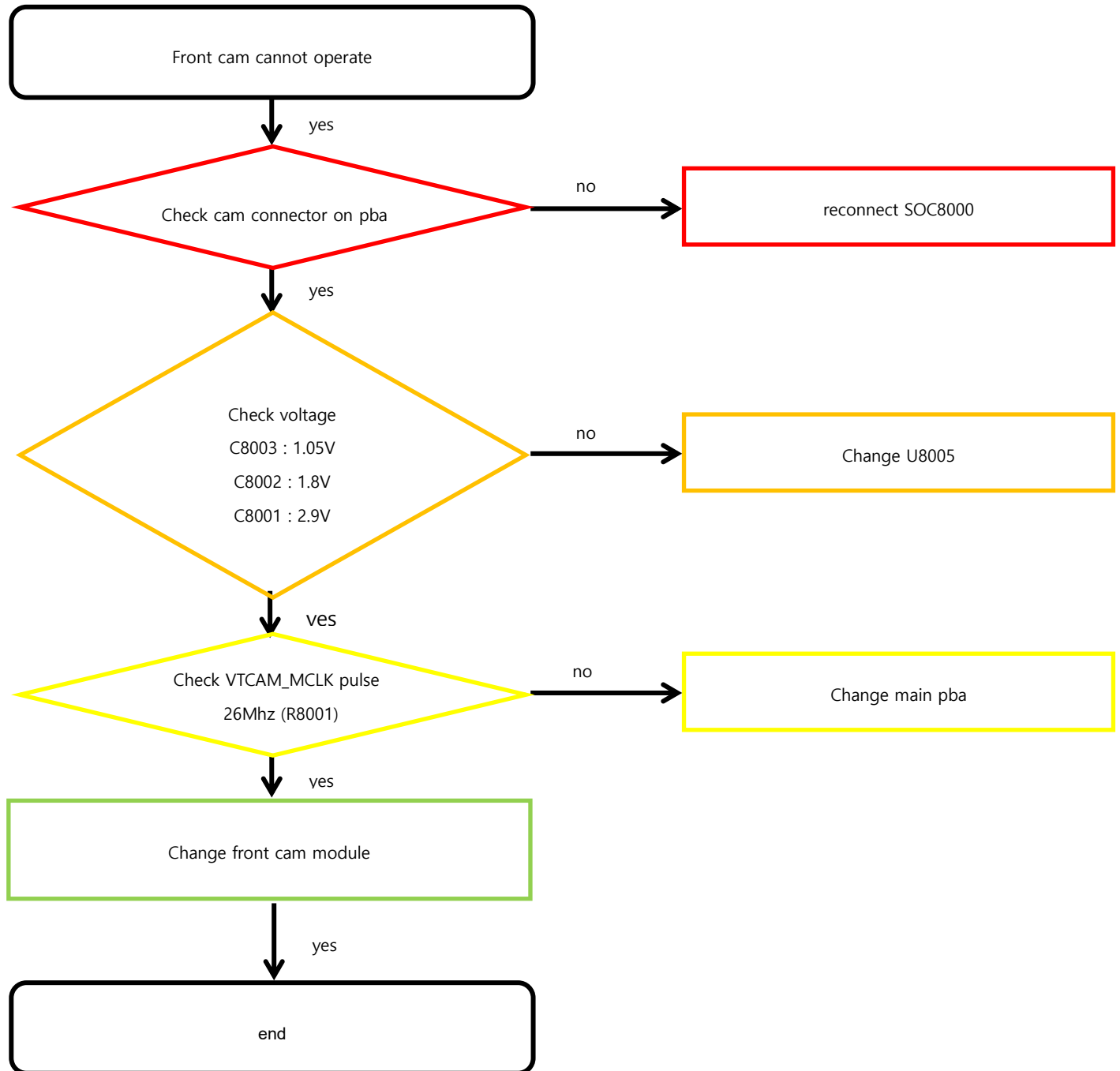


---

## 8. Level 3 Repair

---

### 8-4-18. Front Cam (32M)

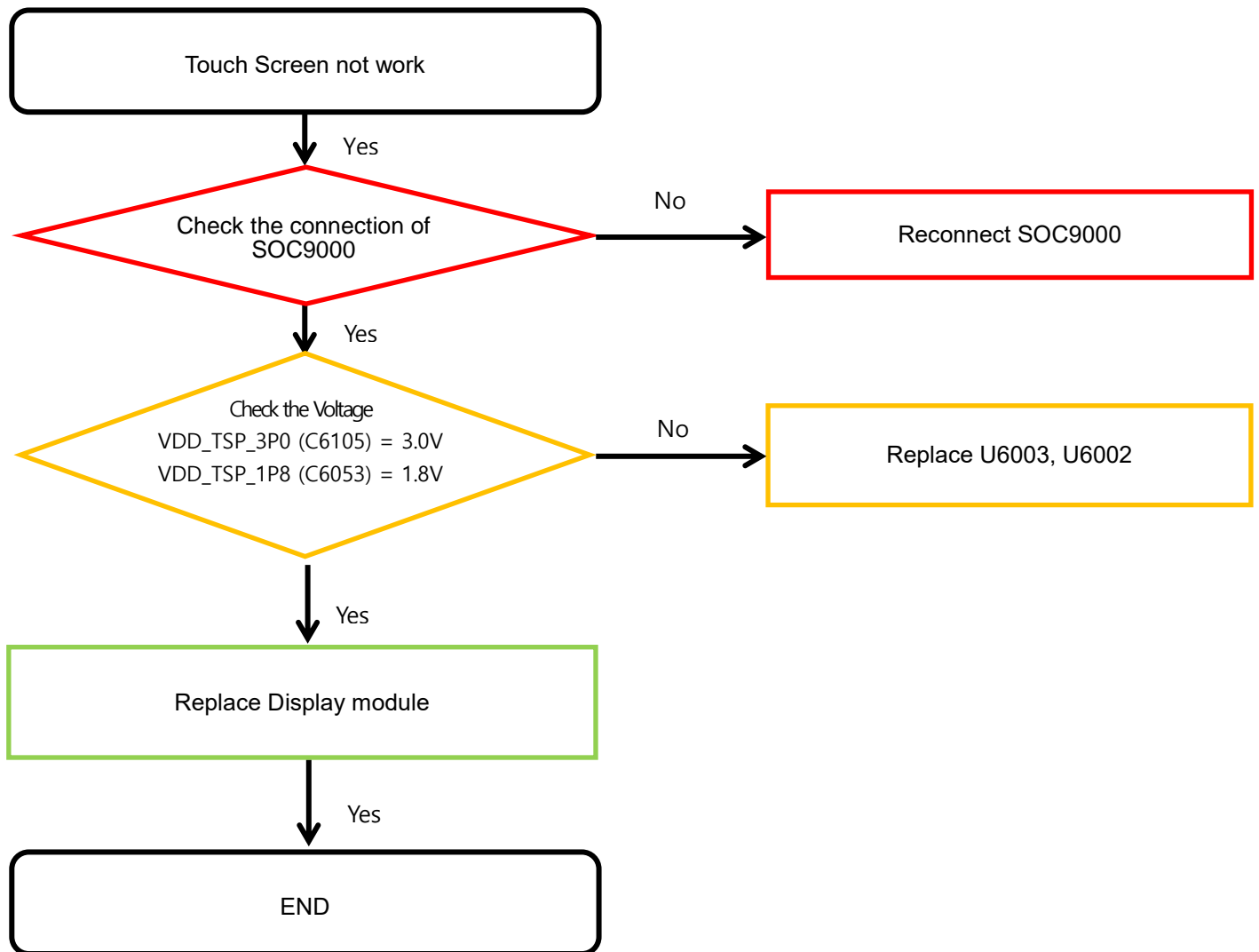


---

## 8. Level 3 Repair

---

### 8-4-19. TSP

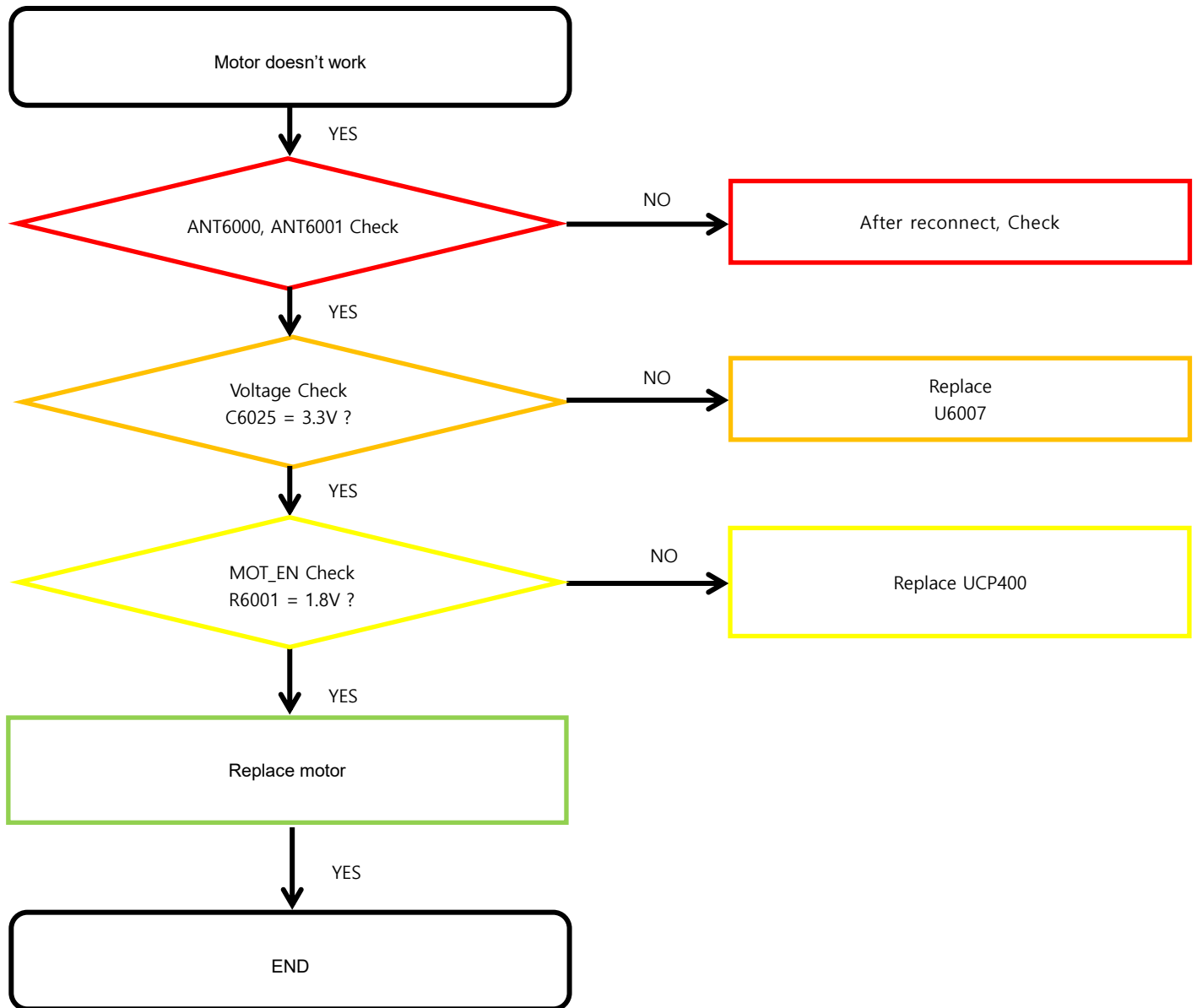


---

## 8. Level 3 Repair

---

### 8-4-20. Motor

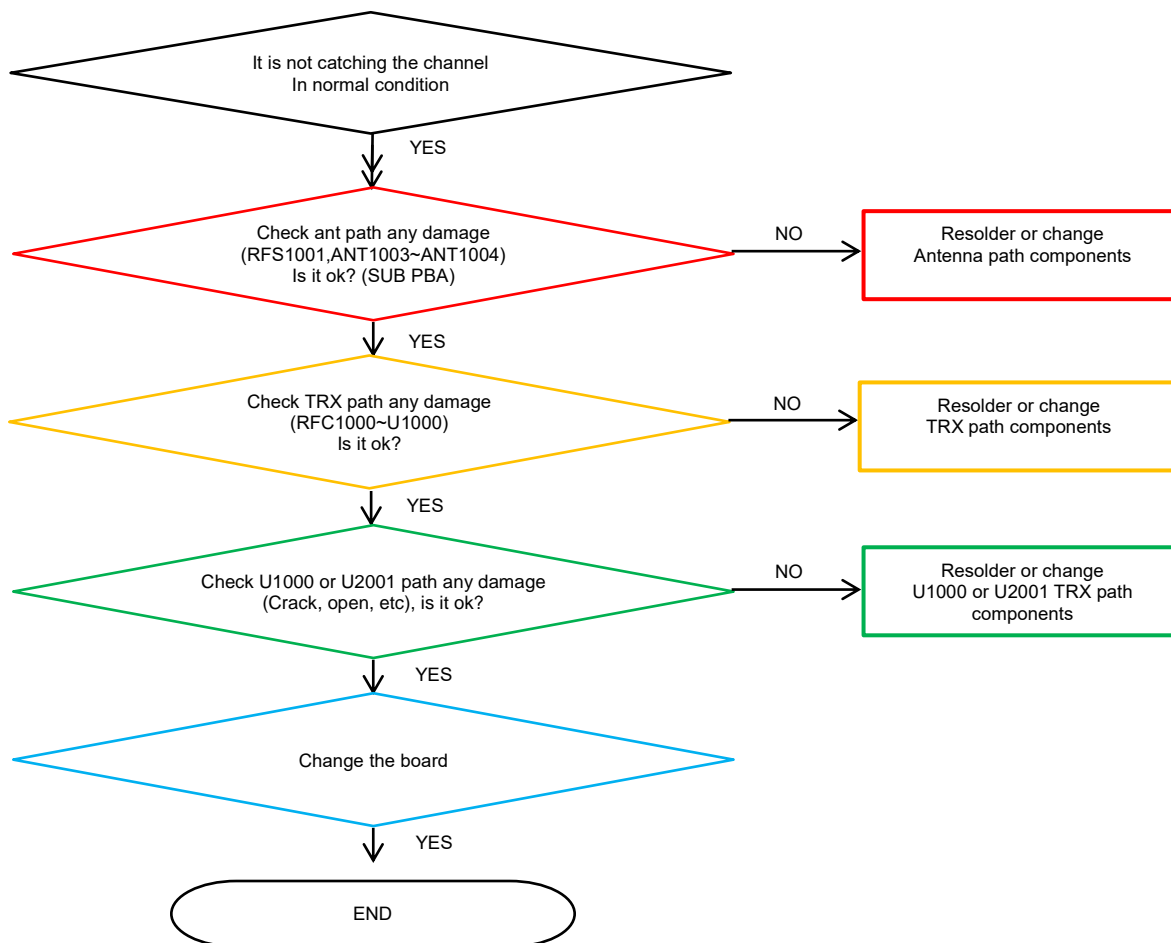


---

## 8. Level 3 Repair

---

### 8-4-21. GSM850/900, WCDMA B5/8, LTE B5/8/12/17/20/26/28 TRX

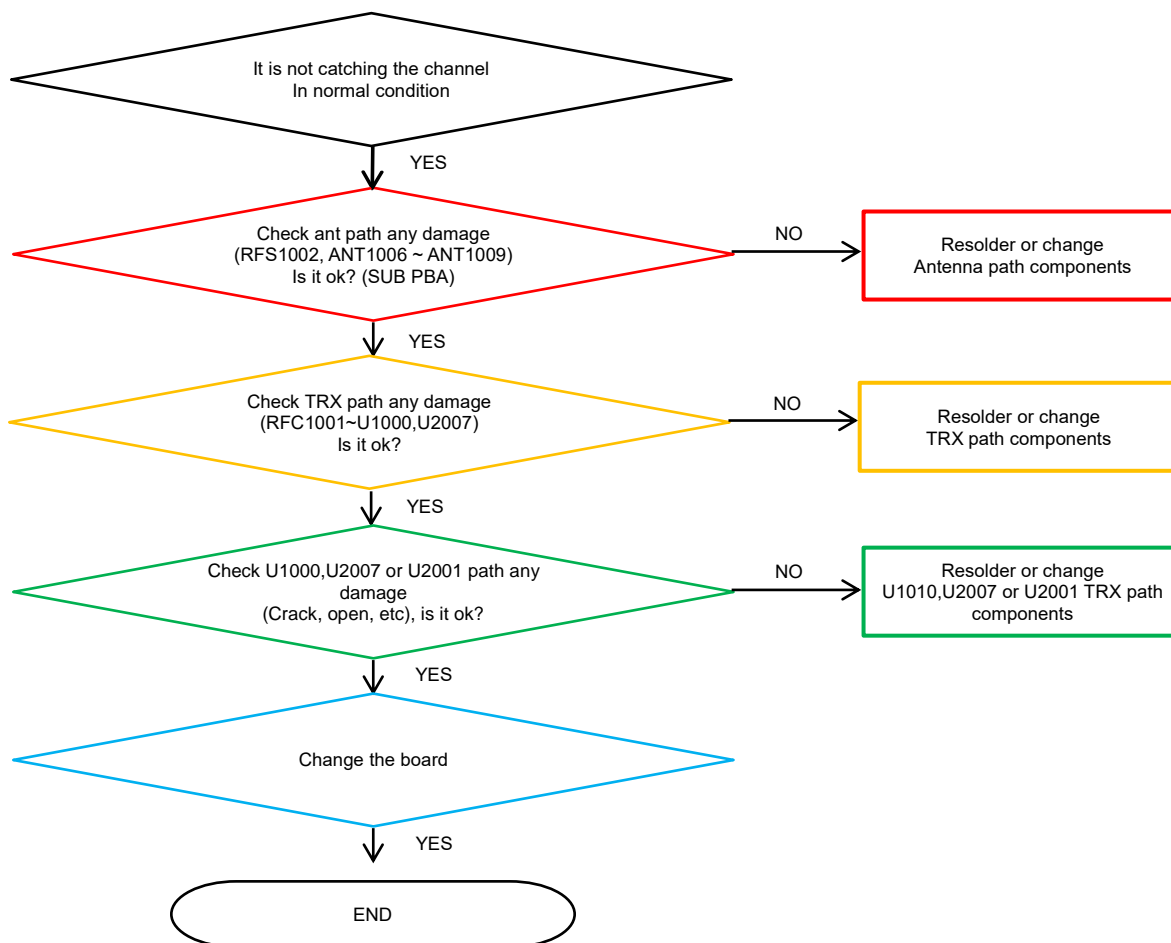


---

## 8. Level 3 Repair

---

### 8-4-22. GSM DCS/PCS, WCDMA B1/2/4, LTE B1/2/3/4/7/32/38/40/41/66 TRX

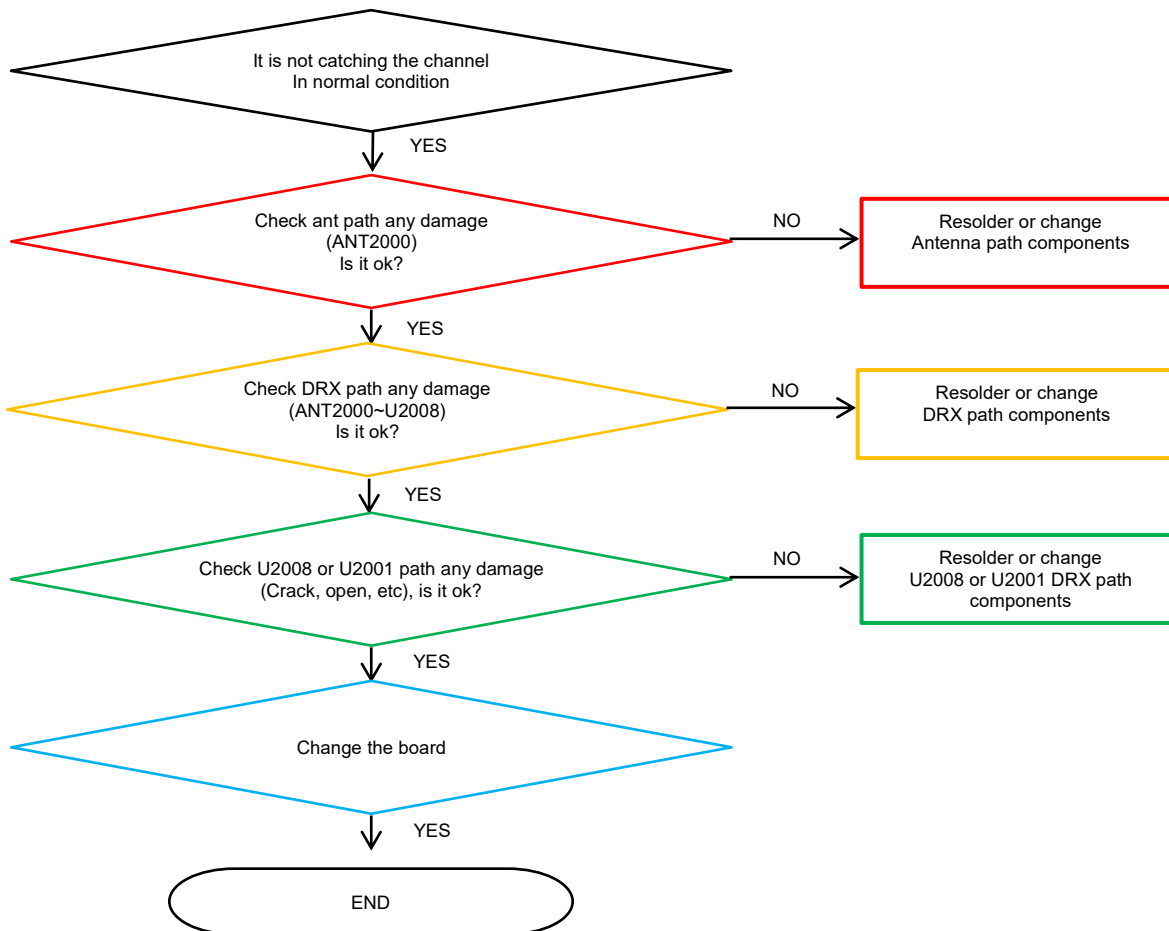


---

## 8. Level 3 Repair

---

### 8-4-23-1. GSM850/900, WCDMA B5/8, LTE B5/8/12/17/20/26/28 DRX [SM-A525F]

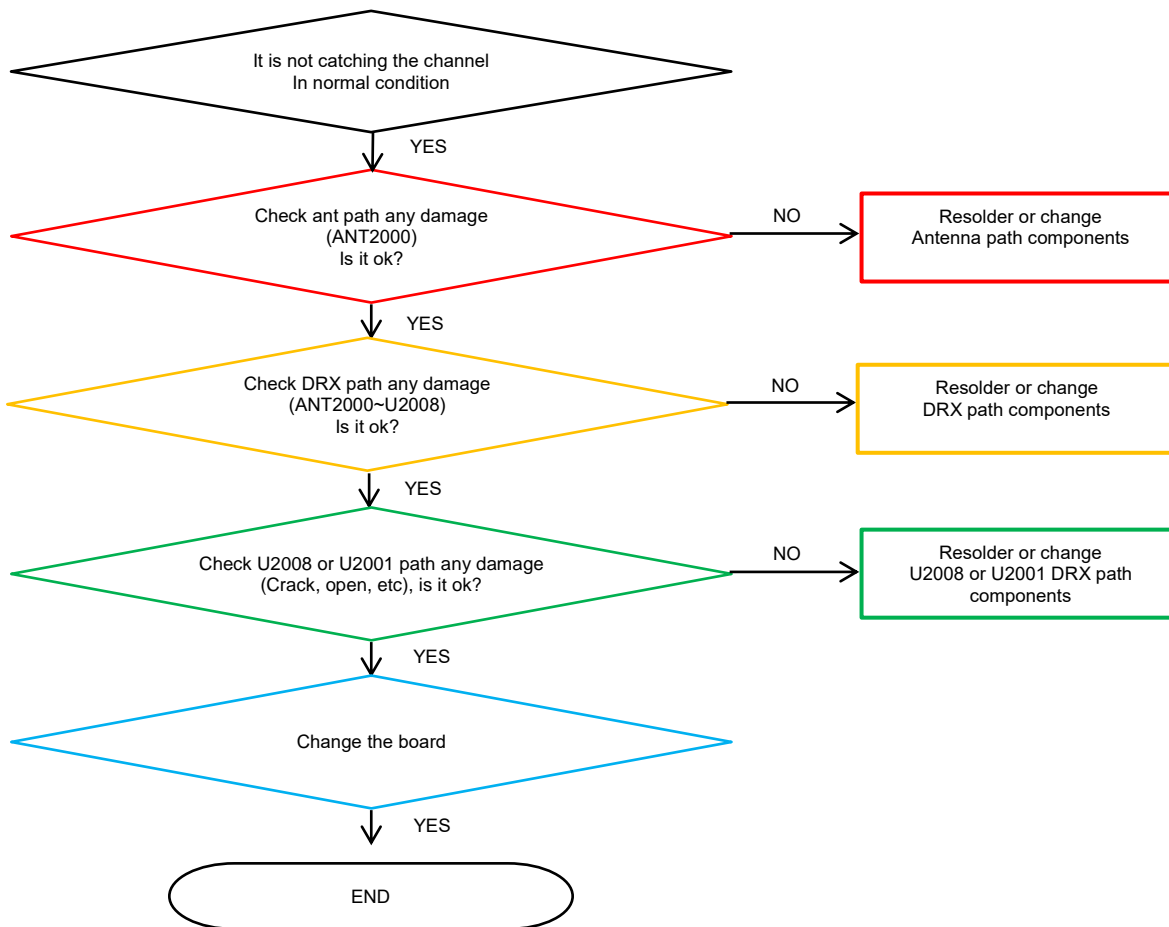


---

## 8. Level 3 Repair

---

### 8-4-23-2. GSM850/900, WCDMA B5/8, LTE B5/8/12/13/17/20/26/28 DRX [SM-A525M]

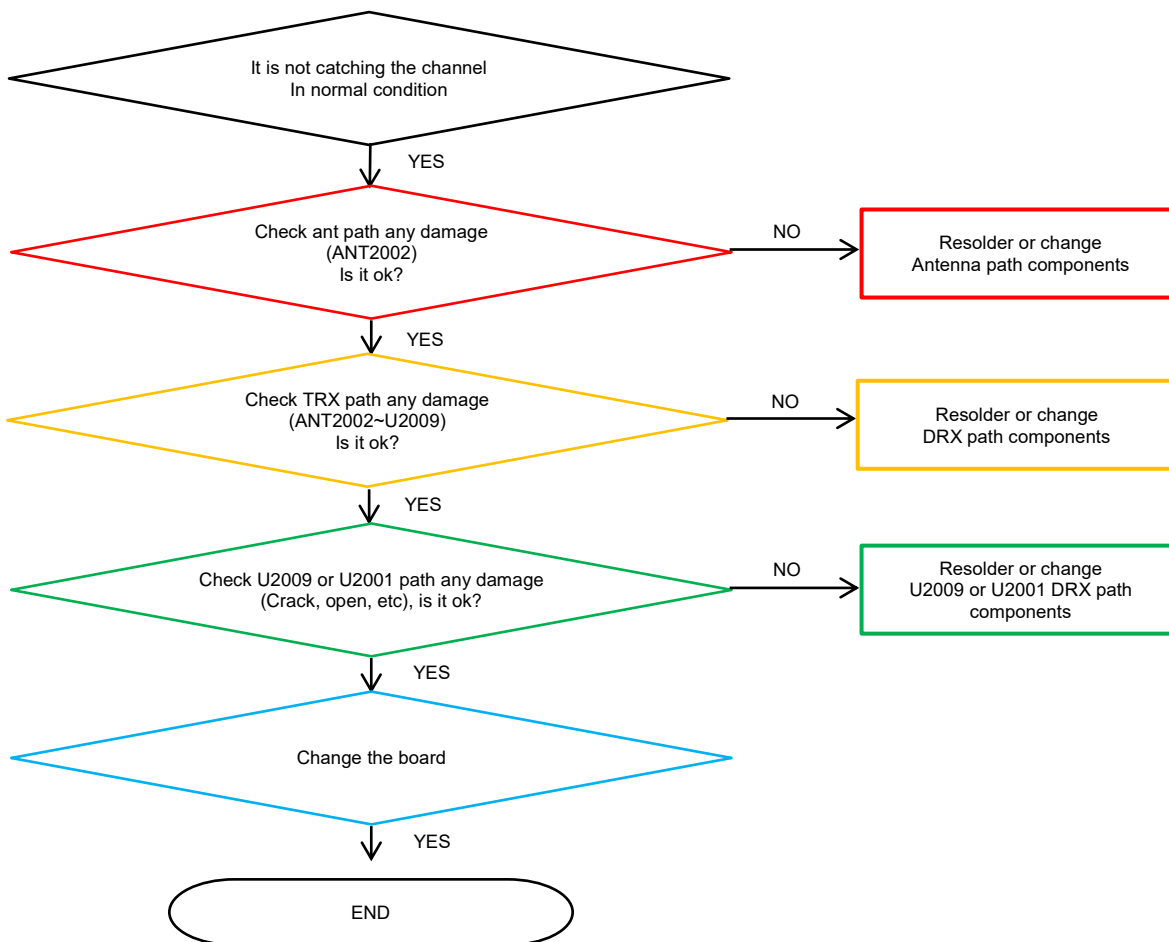


---

## 8. Level 3 Repair

---

### 8-4-24-1. GSM DCS/PCS, WCDMA B1/2/4, LTE B1/2/3/4/7/32/38/40/41/66 DRX [SM-A525F]





---

## 8. Level 3 Repair

---

### 8-4-24-2. GSM DCS/PCS, WCDMA B1/2/4, LTE B1/2/3/4/7/38/40/41/66 DRX [SM-A525M]

